



Engineering Innovative Steel Solutions



Engineering Innovative Steel Solutions



TABLE OF CONTENTS

ABOUT US

ENGINEERING AND TECHNOLOGY
DRIVEN ACTIVITIES

FACTORIES AND AUTOMATION

QUALITY ASSURANCE

PROJECT MANAGEMENT AND ERECTION
ACTIVITIES

SISCOL PROMOTERS



RAVI UPPAL
CHAIRMAN & MD

40 years of experience in the Electromechanical & Infrastructure industry. Distinguished record of setting up new businesses & turn around of existing businesses. Worked with ABB, Siemens, L&T, Volvo, JSPL

Ex- Managing Director, JSPL; Ex- Director, Larsen & Toubro; Ex- Whole Time Director, ABB; Ex- Country Head- Volvo



K . RAJAGOPAL
DIRECTOR – FINANCE

Over 35 years experience of distinguished service in manufacturing industry. Worked with ABB Switzerland, ABB India, JSPL
Ex- CFO, JSPL; Ex-CFO, ABB Switzerland

SISCOL's INVESTORS

M K Ventures



Siddharth Shah

Surin Holdings LLP



*Aman
choudhari*

*J H Parabia
(Transport) Pvt. Ltd.*



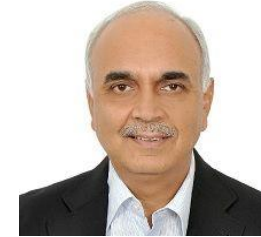
*Zarksis J
Parabia*

*Meridian
Investments*



Siddarth Pai

*Wharton Engineers &
Developers Pvt . Ltd.*



Ranjan Sharma

*Steel Infra Solutions
Pvt . Ltd.*



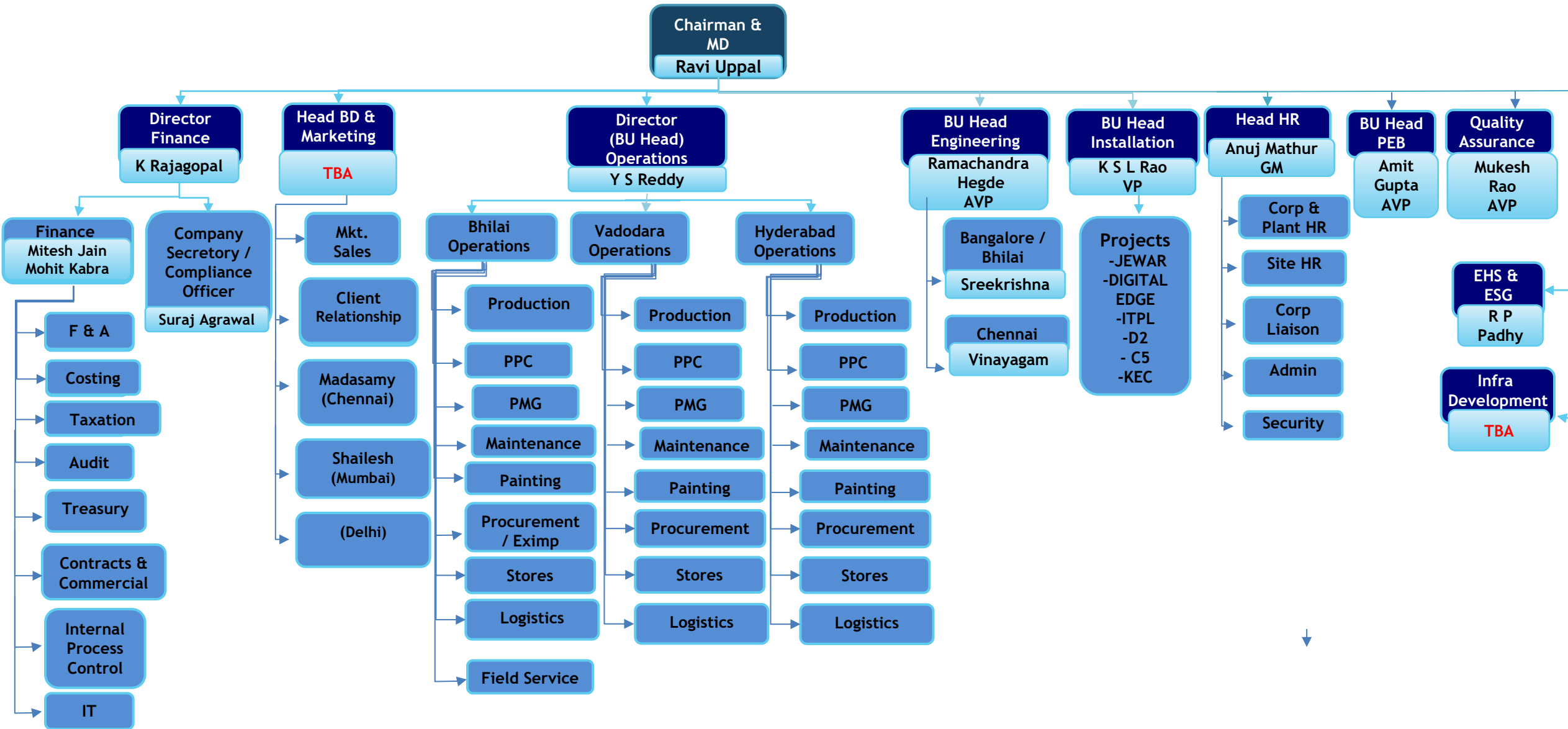
Y S Reddy

*Flute Aura
Entreprises p Ltd*



Rajesh Laddha

SISCOL Organizational Structure



MANAGEMENT TEAM -Operations



Y S Reddy
COO & Director
(Operations)

Over 24 years experience in
Structural fabrication
industries: Hetat- Singapore,
Kirby Building Systems
,Tiger Steel, Octamec.

MANAGEMENT TEAM - Quality



MUKESH RAO

Head – Quality

Mr. Mukesh Rao done B.E in Metallurgy Engineering with more than 17 years of experience. Prior to joining us he was associated with JSW Steel, Larsen & Toubro, Welspun Corp Limited.

MANAGEMENT TEAM - HR & ERECTION

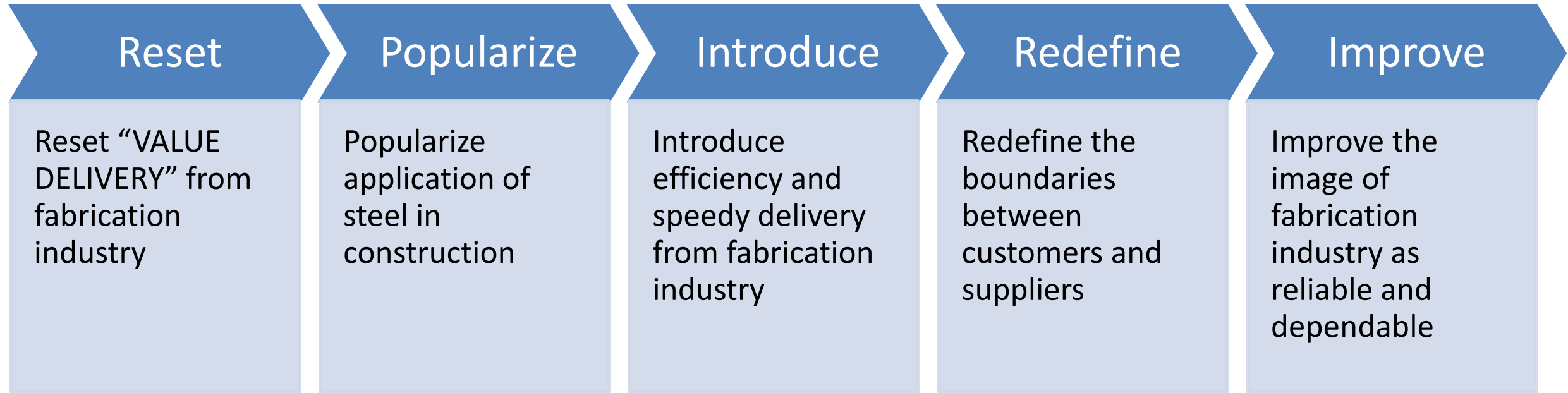


ANUJ MATHUR
HEAD - HR & ADMIN



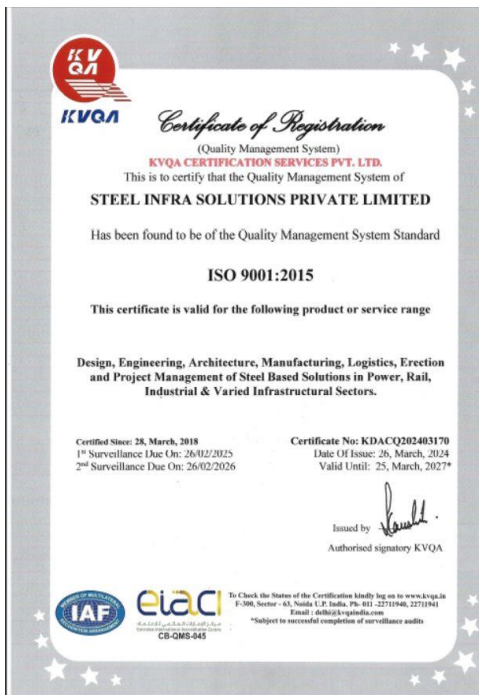
K.S.L SRINIVASA RAO
**HEAD -ERECTION AND
INSTALLATION SERVICES**

A new generation company that aims to....



SISCOL as a company “never sleeps” and is “awake for customer’s needs” at all times

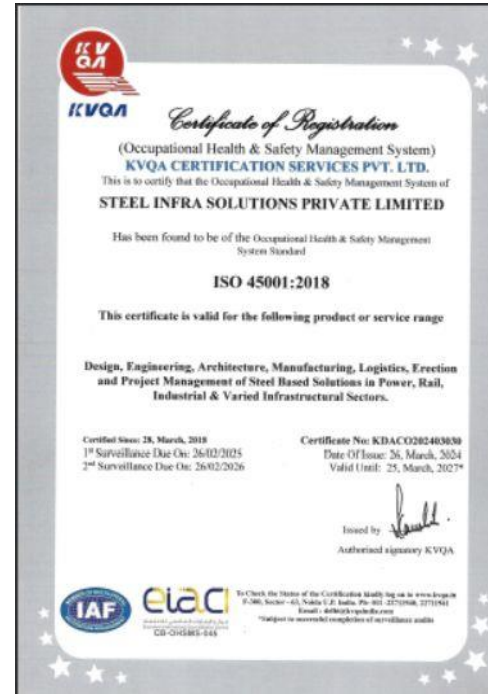
Integrated Management Systems Certifications



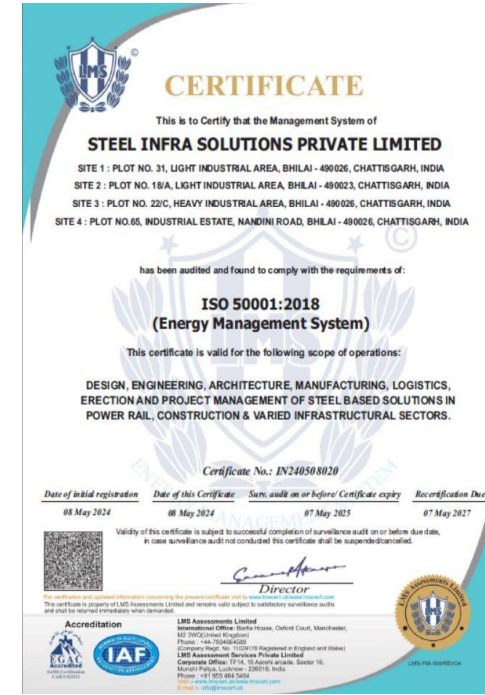
**ISO
9001:2015**



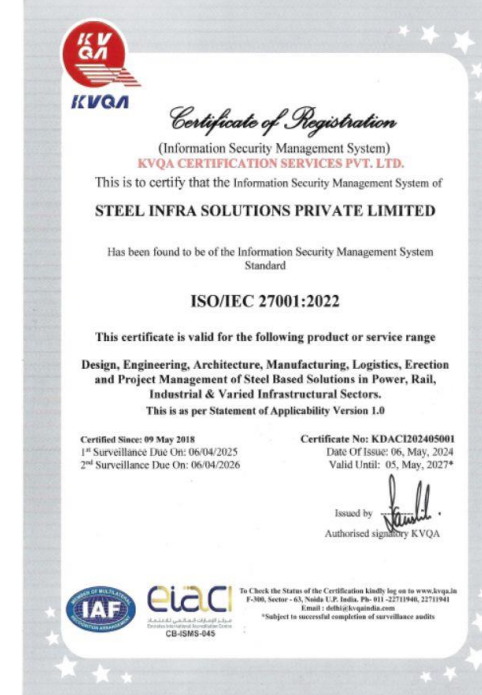
**ISO
14001:2015**



**ISO
45001:2018**



**ISO
50001:2018**



**ISO
27001:2022**

- All units of SISCOIL Bhilai are covered under the scope of Integrated Management Systems (IMS)
- Occupational Health & Safety Management System upgraded from OHSAS 18001:2007 to ISO 45001:2018
- Certification agency conducted annual surveillance in Feb'24 and found “Zero” non-compliances

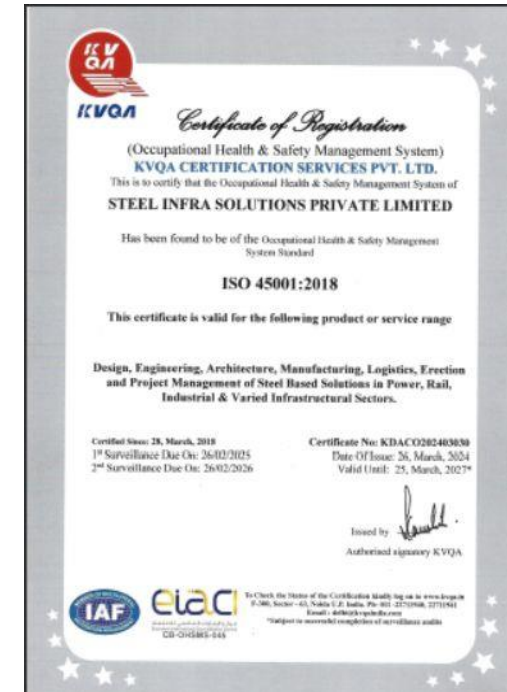
Integrated Management Systems Certifications



**ISO
9001:2015**



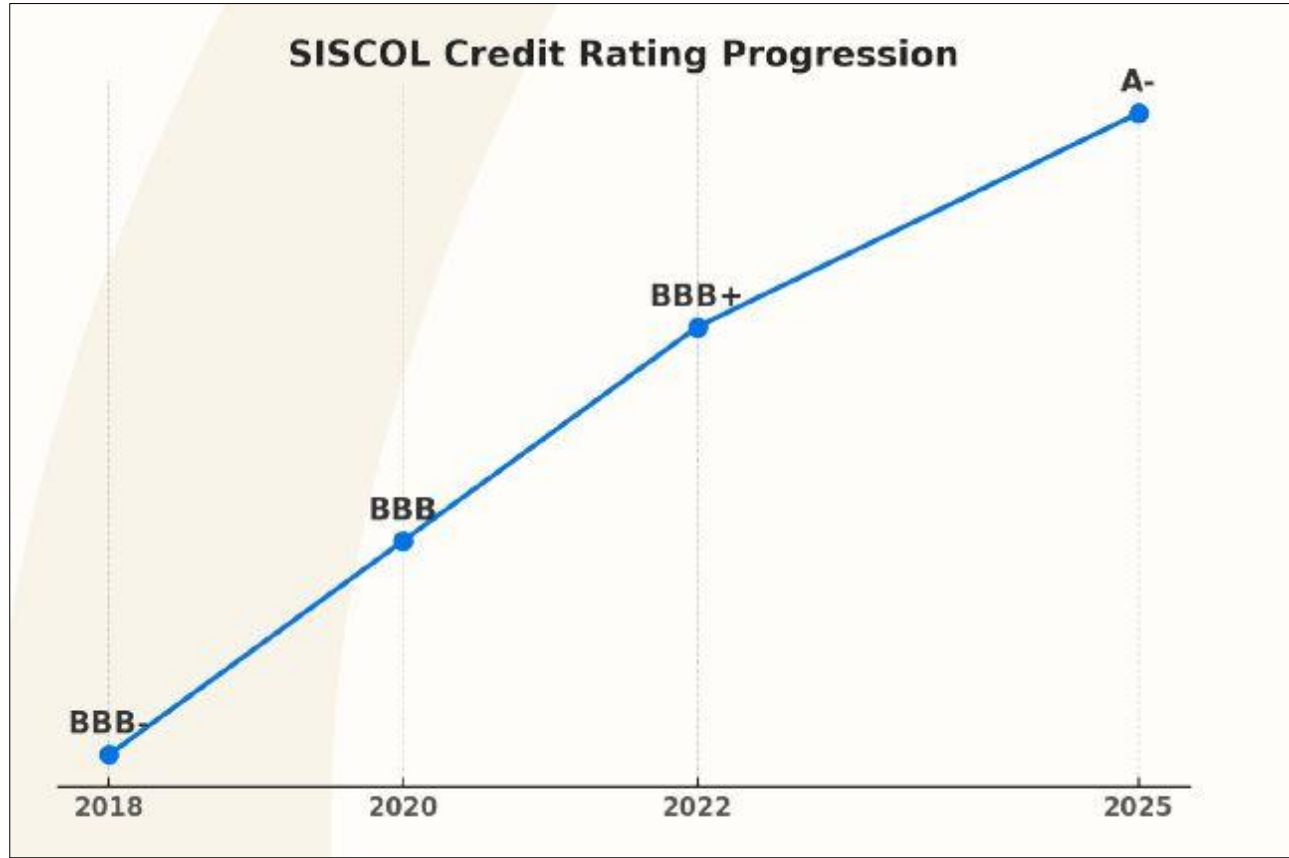
**ISO
14001:2015**



**ISO
45001:2018**

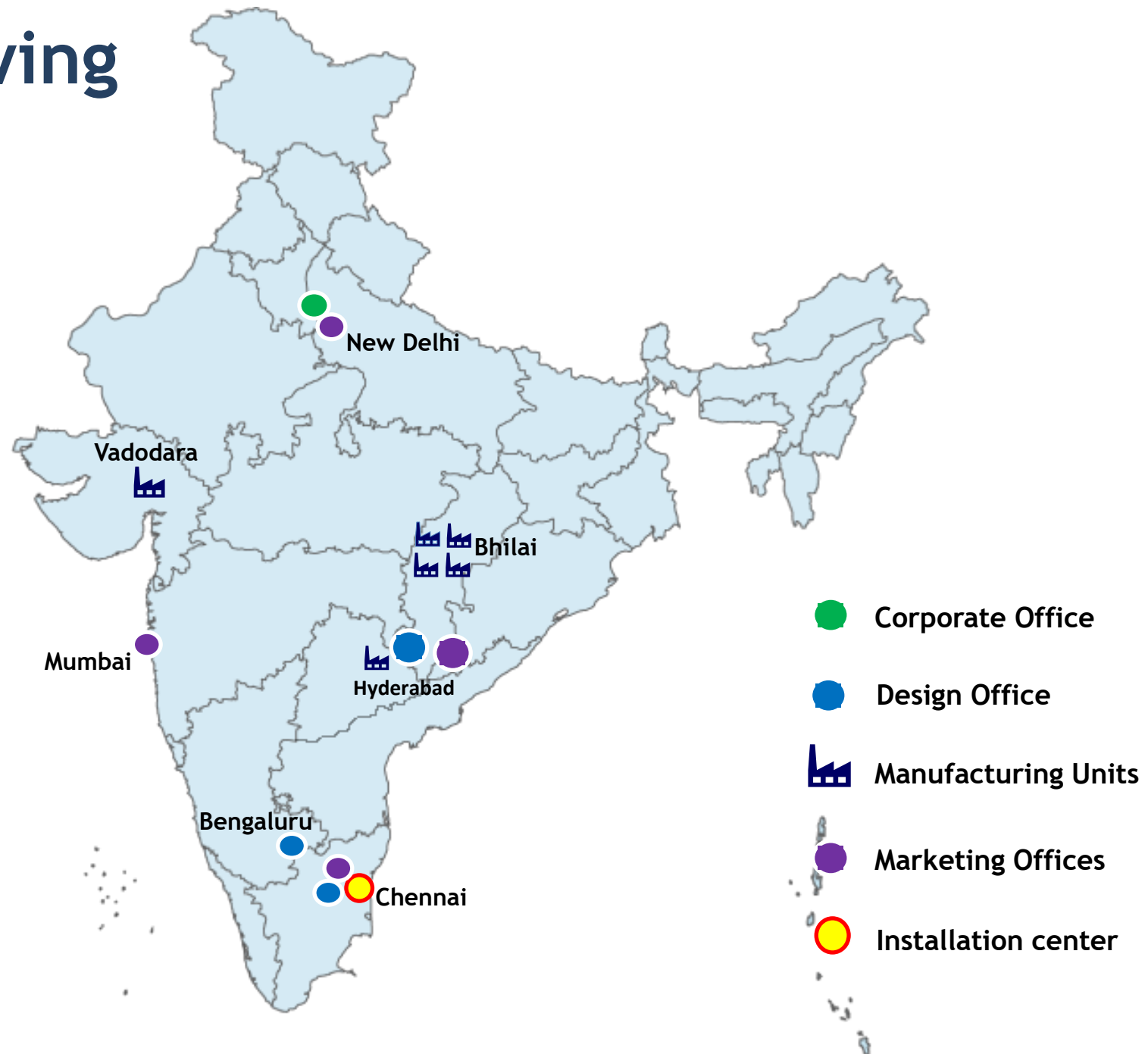
- All units of SISCOL Vadodara are covered under the scope of Integrated Management Systems (IMS)
- Certification agency conducted annual surveillance in Feb'24 and found "Zero" non-compliances

CRISISL Upgrades Rating to A- from BBB+

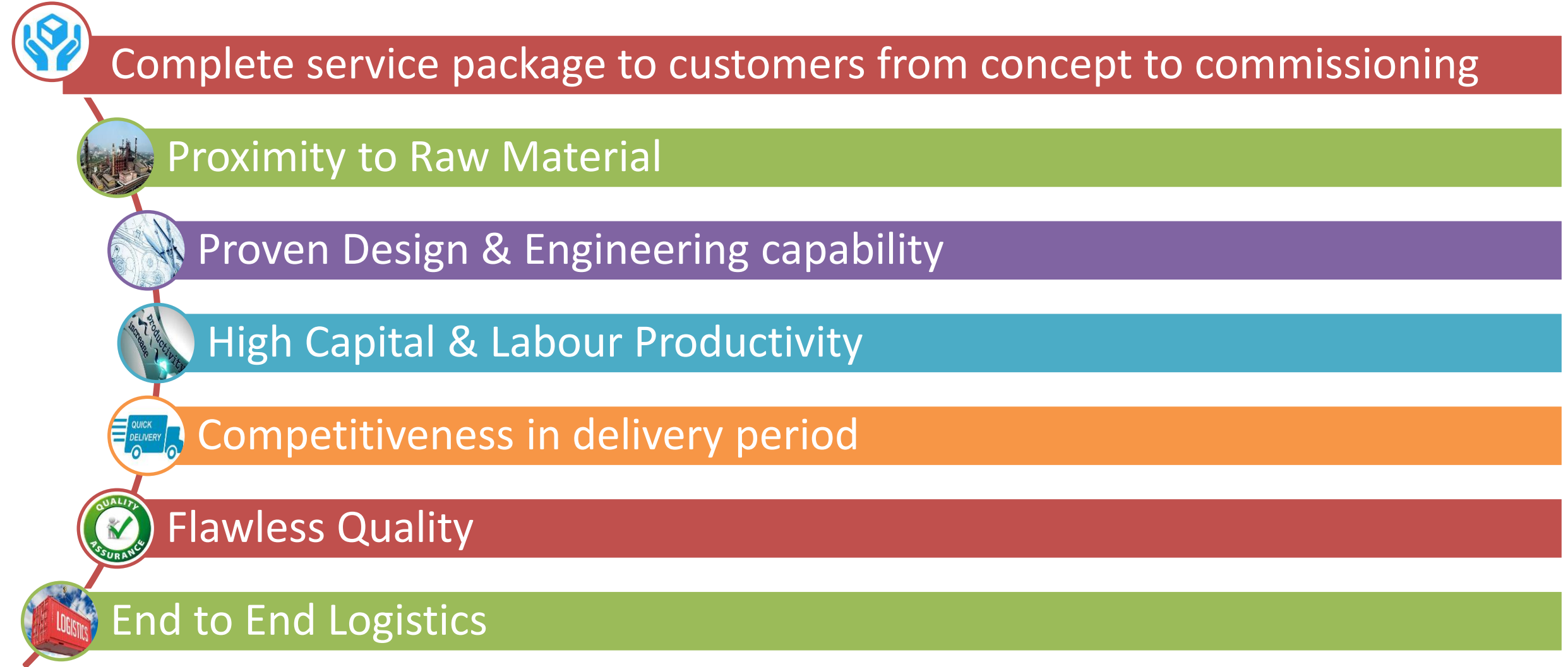


- A proud milestone in 6 years- debt free balance sheet and expanded capacity
- Testament to our financial strength and future ready vision

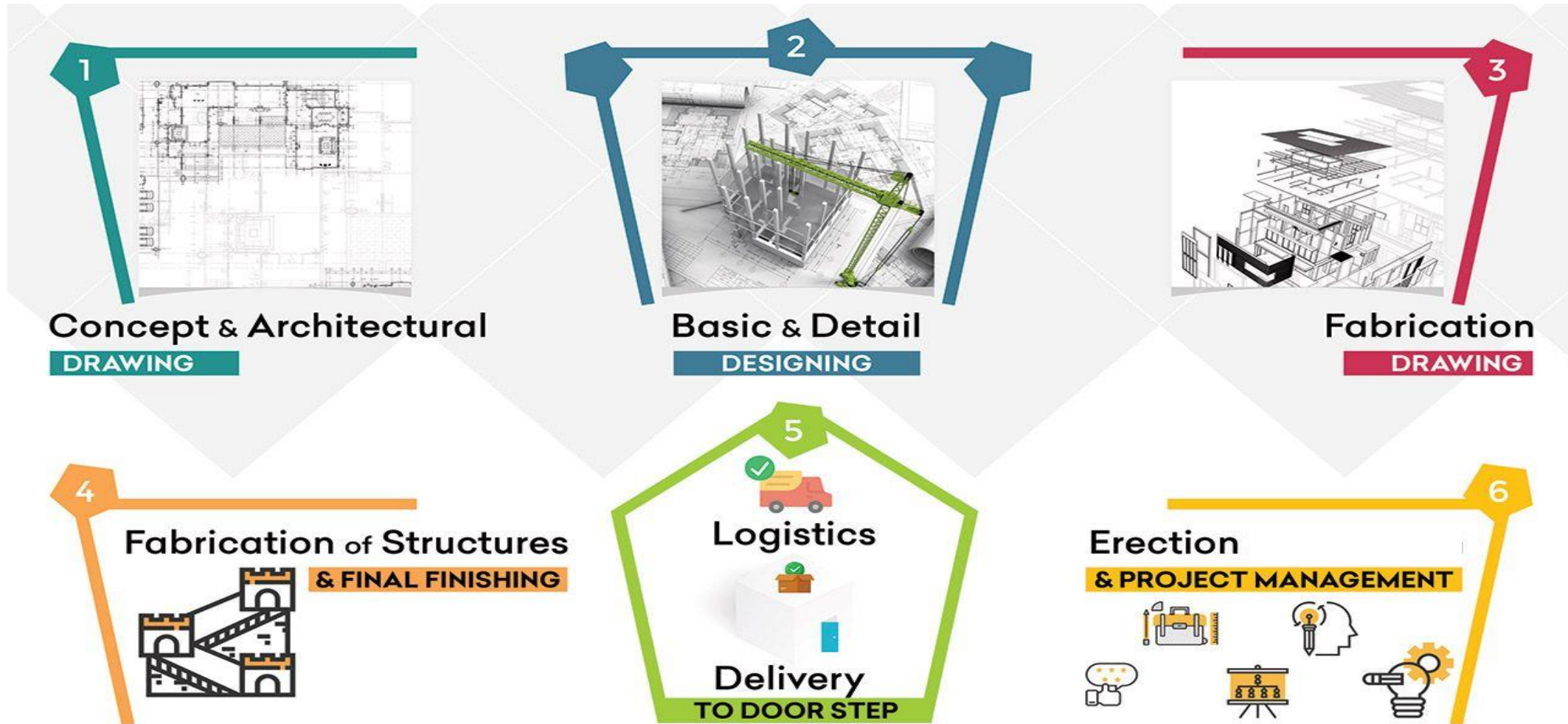
SISCOL's Growing presence



USPs of SISCOL



Enterprise offering complete customer solution



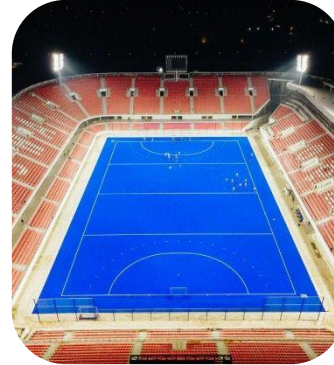
CLIENT SEGMENTS



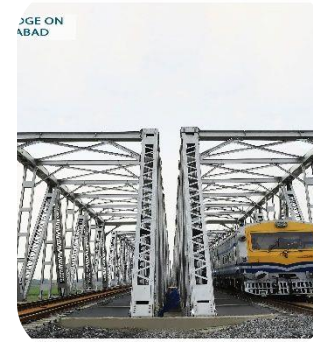
**Highrise
Buildings &
Data Centers**



Airports



**Sports
Stadiums**



**Bridges, ROBs,
Flyovers,
Skywalks**



PEB



**Hotels &
Hospitals**



**Industrial
Infrastructure**



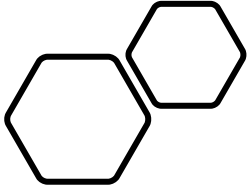
**Metro-rail &
Mono-rail**



**Launching
Girders**

SISCOL's Customers





ENGINEERING AND TECHNOLOGY DRIVEN ACTIVITIES

Engineering Services

ANALYSIS AND DESIGN SOFTWARE:

STAAD.PRO, RAM STRUCTURAL SYSTEM, MICROSTRAN, LIMCON, ETABS

DETAILING SOFTWARE:

•TEKLA, AUTOCAD



STAAD.Pro

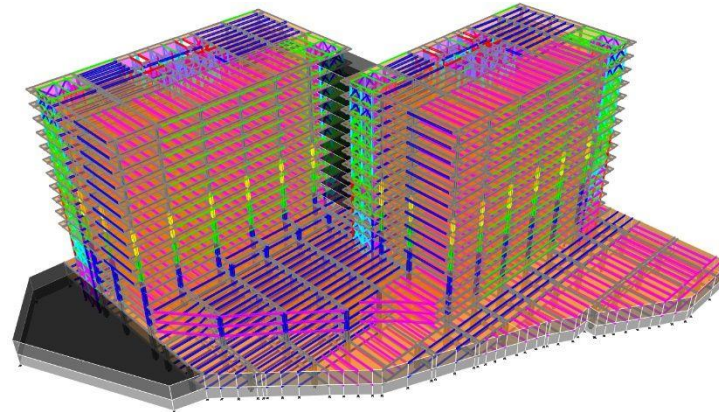
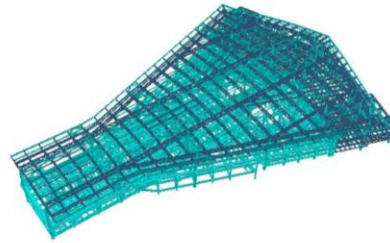
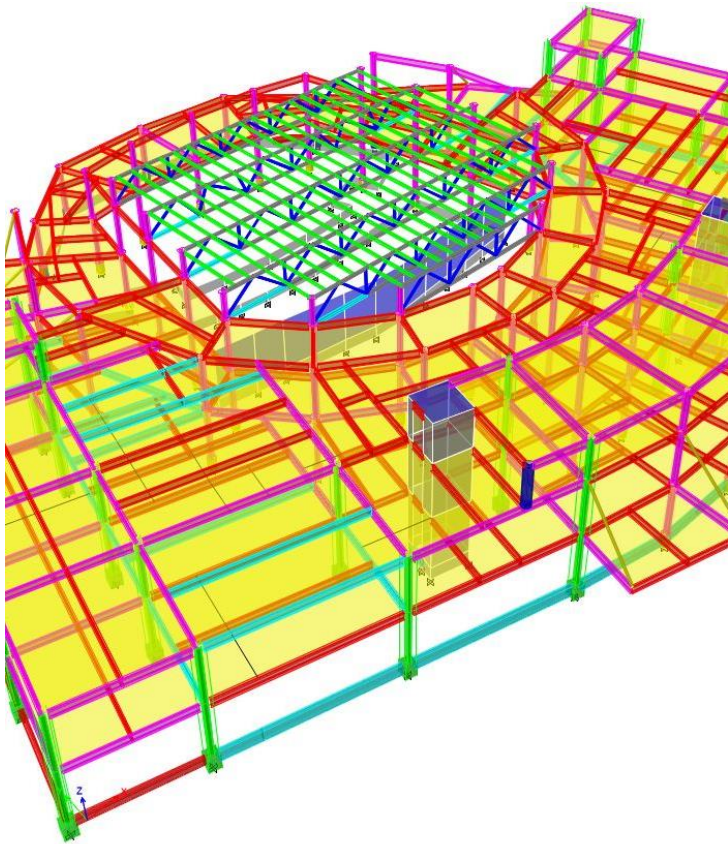
RAM Structural Systems



**Design Office @
Bengaluru, Chennai,
Bhilai, Hyderabad**

Team Strength: 75

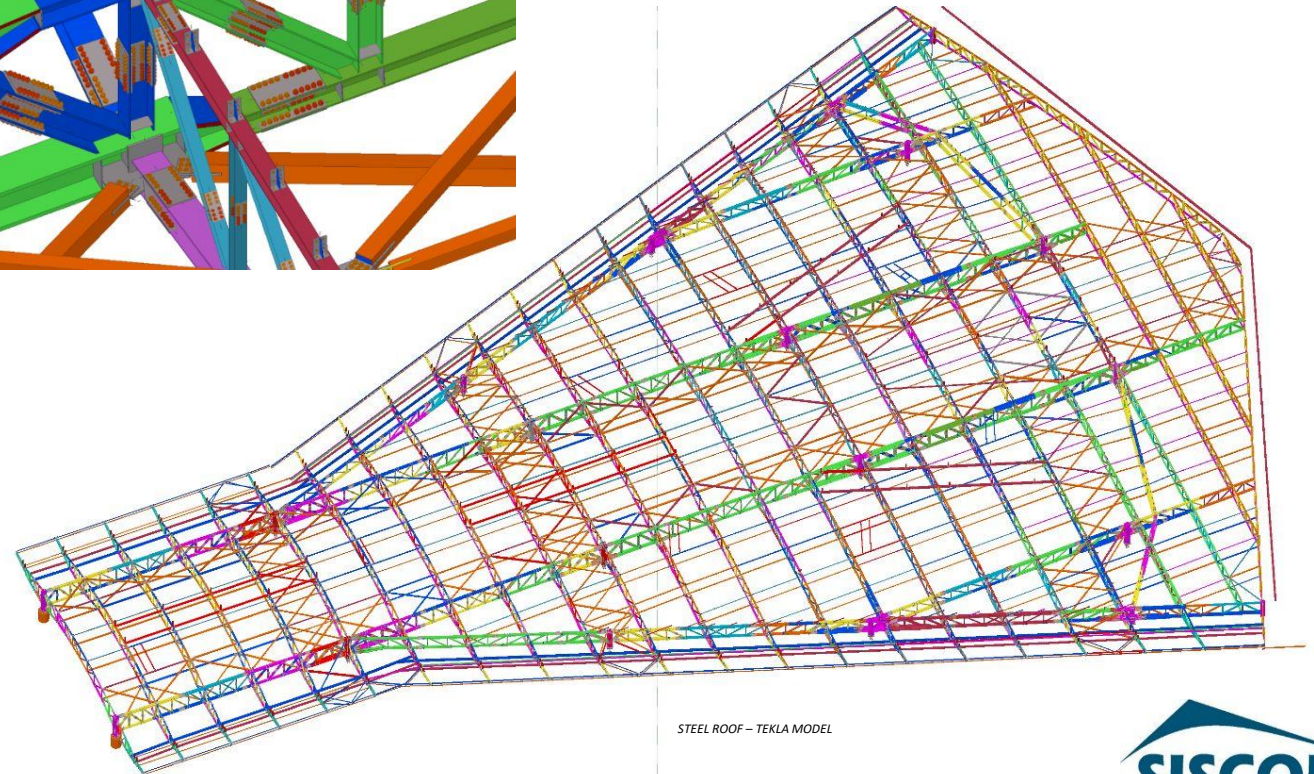
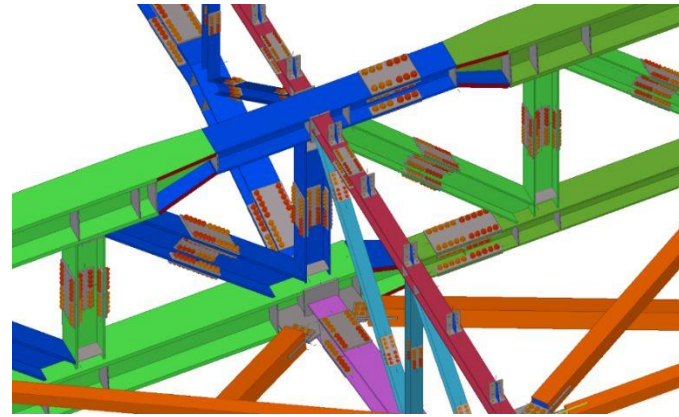
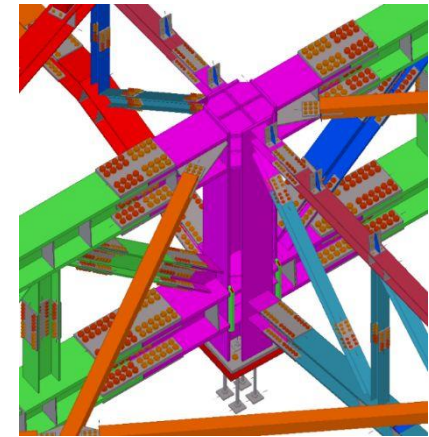
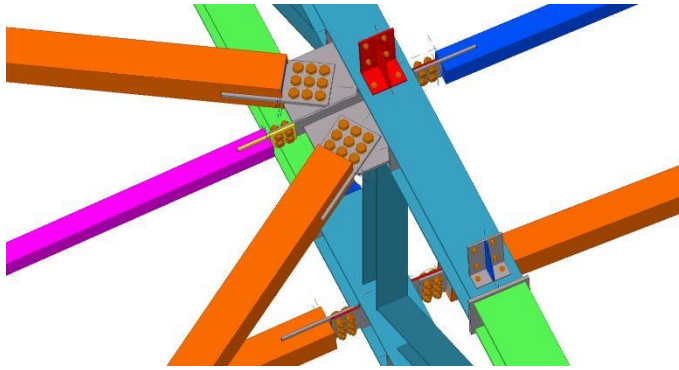
DESIGN ENGINEERING



- DESIGN ENGINEERING IS CARRIED OUT USING STAAD OR ETABS
- LOADING IS BASED ON INDIAN OR INTERNATIONAL CODES
- LOAD CASES ARE BASED ON INTERNATIONAL NORMS

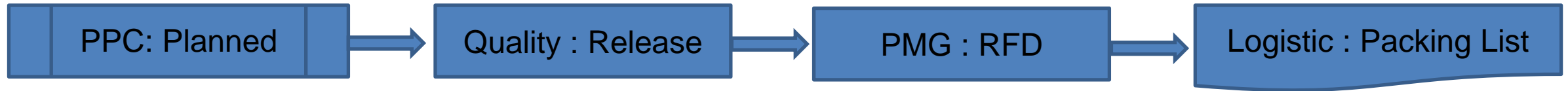
DETAILING

- DETAILING IS DONE USING TEKLA MODELLING
- COMPLEX STRUCTURES CAN BE DETAILED TO ENSURE NO BOLT CLASHES
- TEKLA ALLOWS EASY RESOLUTION TO SITE RELATED ISSUES AND PLAYS A MAJOR PART IN PLANNING ERECTION METHODOLOGY FOR COMPLEX STRUCTURES



STEEL ROOF – TEKLA MODEL

INTEGRATED SAP SYSTEMS



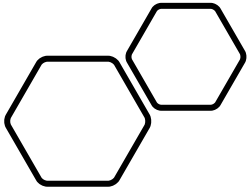
| Steps | Department | Responsibility | Activity (SAP Transaction) |
|-------|------------|------------------|--|
| 1 | PPC | Planning Team | Import all Items and BOM as per drawings, (Production\Production Order: Status = Planned) |
| 2 | Quality | Quality Team | Release of Components (Part mark) wise Production Order in SAP after physical clearance of Parts marks (Production\Production Order: Status = Released) |
| 3 | PMG | Project Managers | Receipt of Part Marks as RFD from Production Orders. (Production\Receipt From Production) |
| 4 | Logistic | Logistics Team | Preparing Packing List only from RFD received by the Project Managers (Sales\Delivery) |



FINISHED GOOD AND LOGISTICS

- BAR CODING MENTIONING PART MARK, RELEVANT DRAWING NUMBER ON EACH PART
- TRUCKS LOADED AND FASTENED TO ENSURE NO DAMAGES DURING TRANSIT
- GPS TRACKING SYSTEM ON TRAILERS TO MONITOR MOVEMENT TILL DESTINATION





FACTORIES AND AUTOMATION

Factory Fabrication Facilities

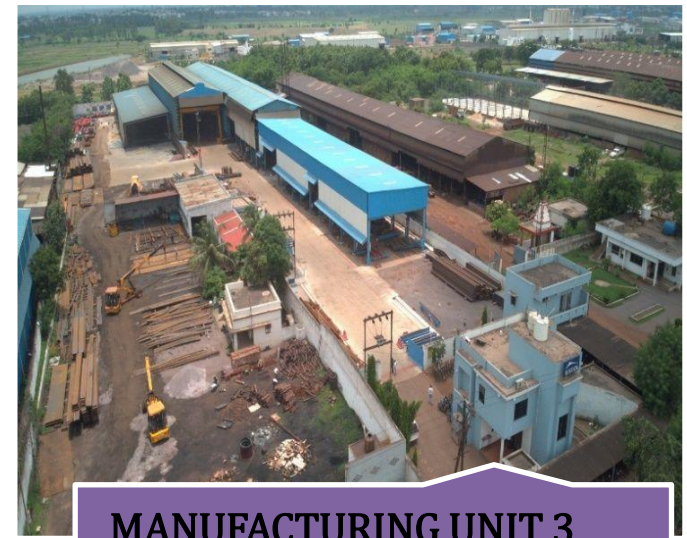
| SISCOL Units | Unit-1 | Unit-2 | Unit-3 | Unit-4 | Unit-5 (Vadodara) | Total |
|-----------------------------------|------------------------------------|------------------------------------|------------------------------------|--------------------------|--------------------------|---------------------------|
| Area | 7 Acres (28328 sq.m) | 4 Acres (16187 sq.m) | 10 Acres (32234 sq.m) | 3 Acres (10117 sq.m) | 10 Acres (25678 sq.m) | 34 Acres (112544 sq.m) |
| Maximum Production Capacity | 1500 MT | 1000 MT | 2000 MT | 500 MT | 1500 MT | 6500 MT |
| Specialization | Industrial, High Rise | Bridges | Industrial, High Rise | Industrial | Industrial | All Sectors |
| Equipments | CNC Machine, GMAW, FCAW, SAW | CNC Machine, GMAW, FCAW, SAW | CNC Machine, GMAW, FCAW, SAW | GMAW,FCAW, SAW | GMAW,FCAW, SAW | Full-Fledged |



MANUFACTURING UNIT 1
Capacity - 1500 MT



MANUFACTURING UNIT 2
Capacity - 1000 MT



MANUFACTURING UNIT 3
Capacity - 2000 MT

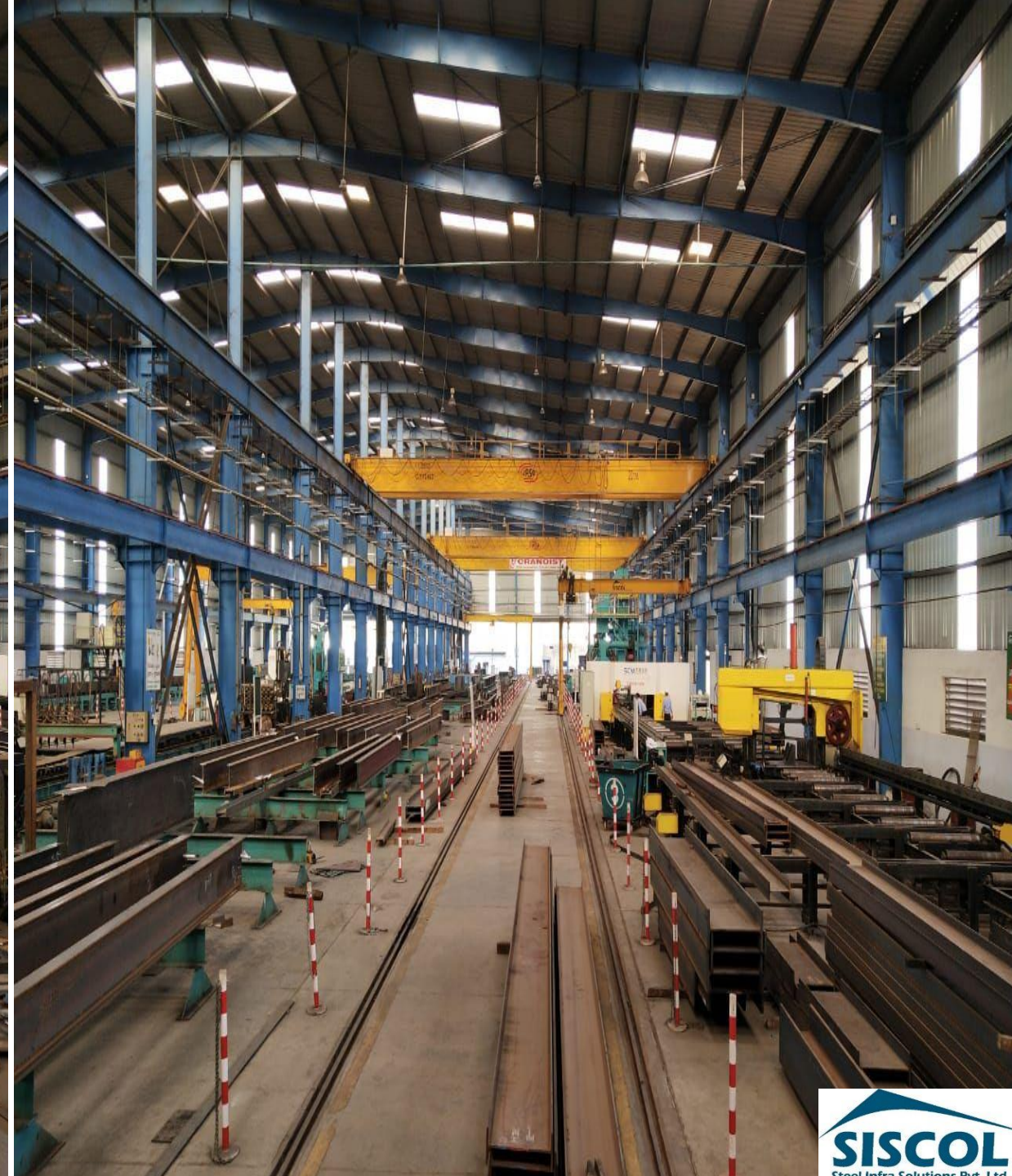
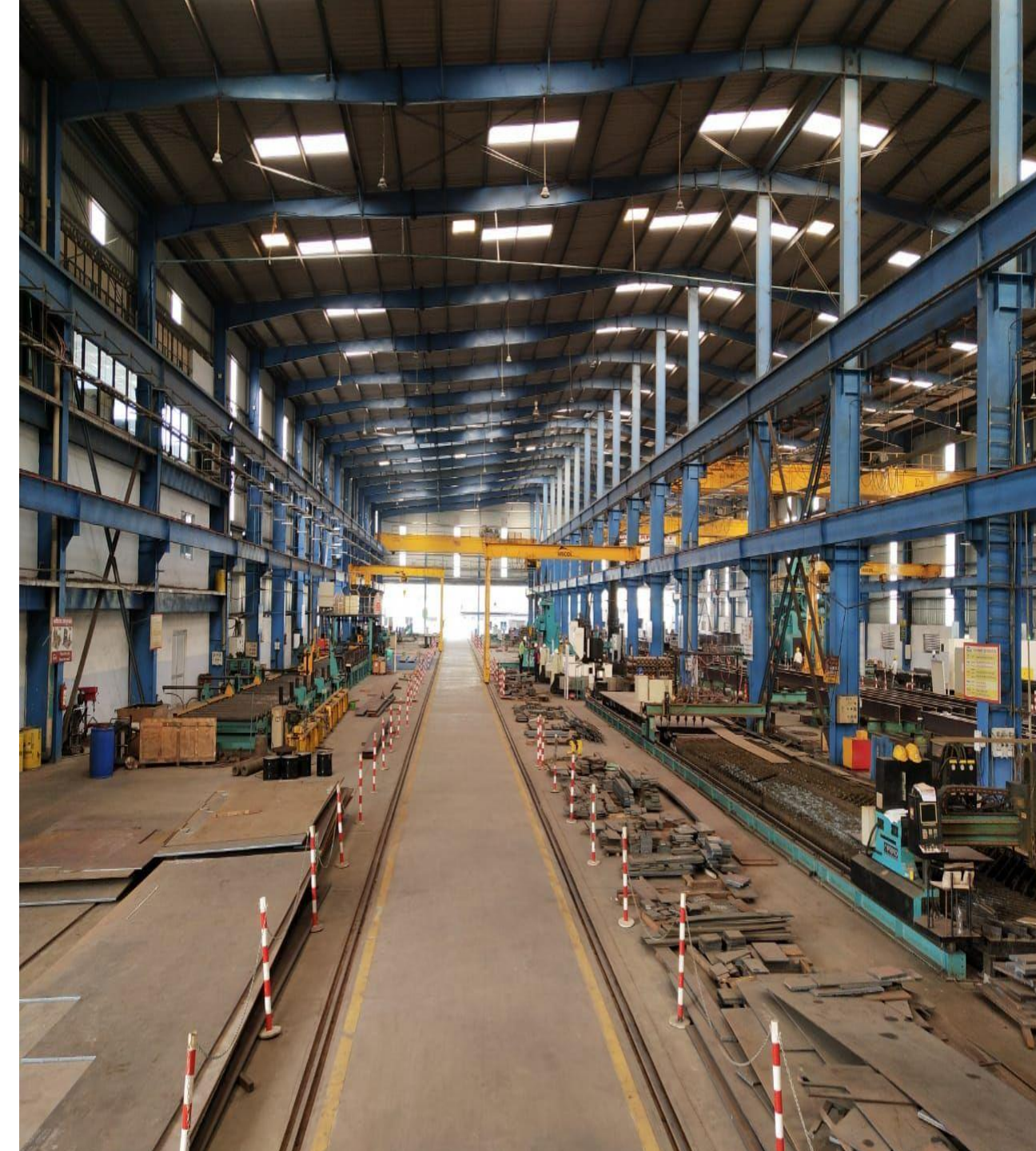


MANUFACTURING UNIT 4
Capacity - 500 MT



MANUFACTURING UNIT 5
Capacity - 1500 MT

**SISCOL MANUFACTURING
FACILITY UNIT-1 & UNIT-2**



BARODA factory



SISCOL Leadership Team



Overall team strength of Bhilai Operations > 1400



CNC PLASMA AND STRIP CUTTING MACHINES



CNC 3-AXIS DRILLING MACHINES



CNC HIGH SPEED DRILLING MACHINES



CNC Band Saw Machine



Automatic Shot Blasting M/c



H-Beam/PTW Machine



Painting Booth System



Straightening Machine



Iron Worker



Laser Pointed SAW M/c



Milling Machine



Radial Drilling Machine



75 MT Crawler Crane



5-50T EOT & 5T Semi Gantry



8 MT Cross Bay Trolley



1500 kVA Transformer



60 MT Weigh Bridge



16 MT Semi Gantry Crane

PAINTING FACILITIES

TOTAL 5 INDEPENDENT PAINT SHOPS AND BLASTING FACILITIES

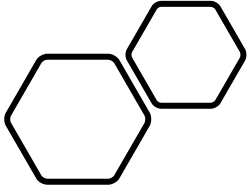
- TOTAL CAPACITY OF PAINTING 4000 MT /MONTH.
- ALL PAINT SHOPS ARE EQUIPPED WITH AIRLESS PAINTING MACHINES, COMPRESSORS AND METALIZING EQUIPMENTS.
- DRY ABRASIVE SHOT BLASTING FACILITIES AVAILABLE.
- CHILLED CI SHOTS, PS BALLS AND COPPER SLAG USED AS BLASTING ABRASIVES.



Logistics Services

- SISCOL provides logistic services for safe delivery of finished goods at site.
- Our plant has facility of internal weighment of Vehicles with a capacity of 60MT.
- All the vehicles are loaded by a team of highly experienced and professional Loaders.





QUALITY ASSURANCE

Quality Vision

Doing right, 'first time - every time - in time'

Even make it impossible to do wrong things



Thru'

Well trained & dedicated workforce

Proven quality systems & processes; Constantly improved

Automation in manufacturing processes

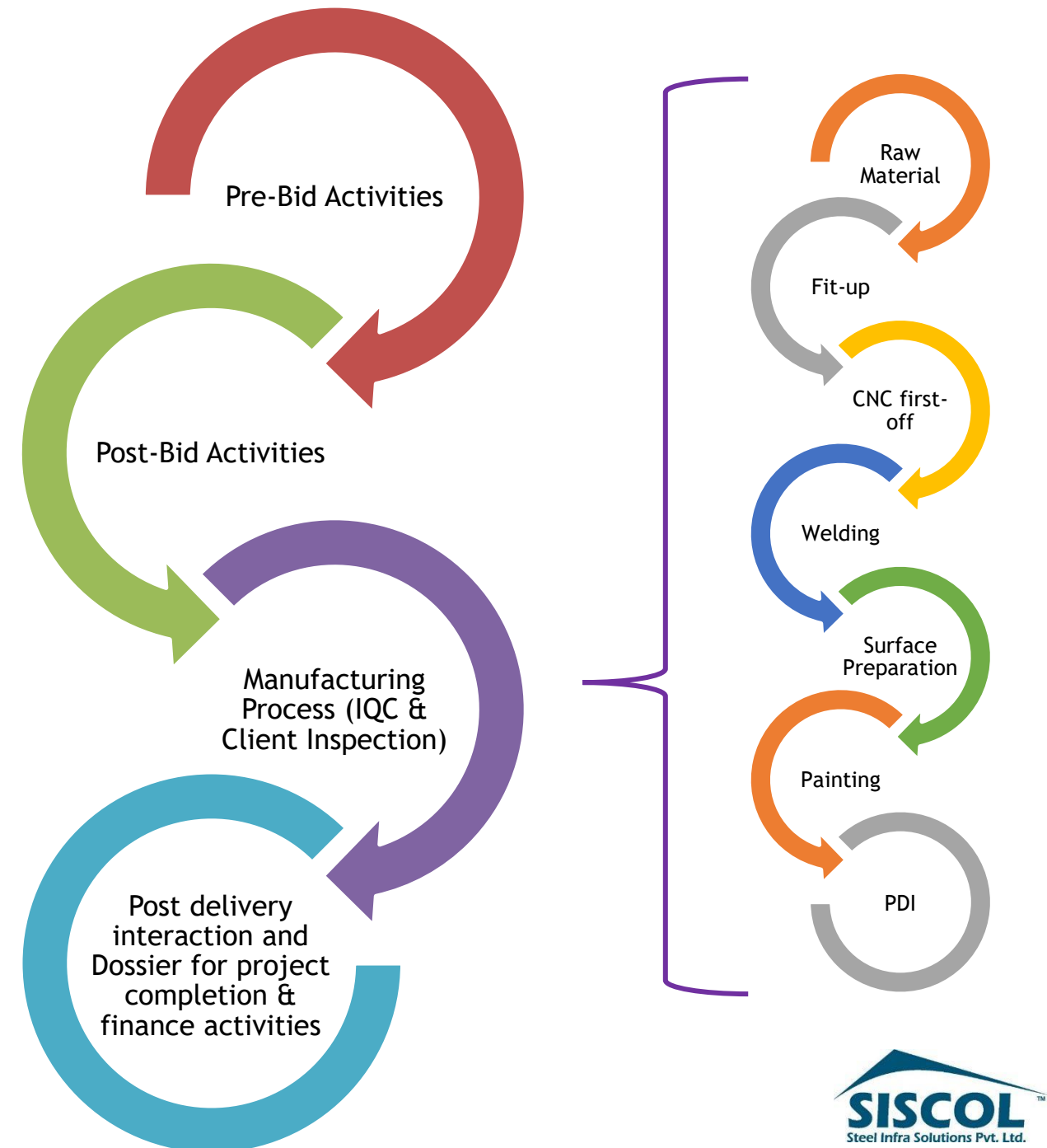
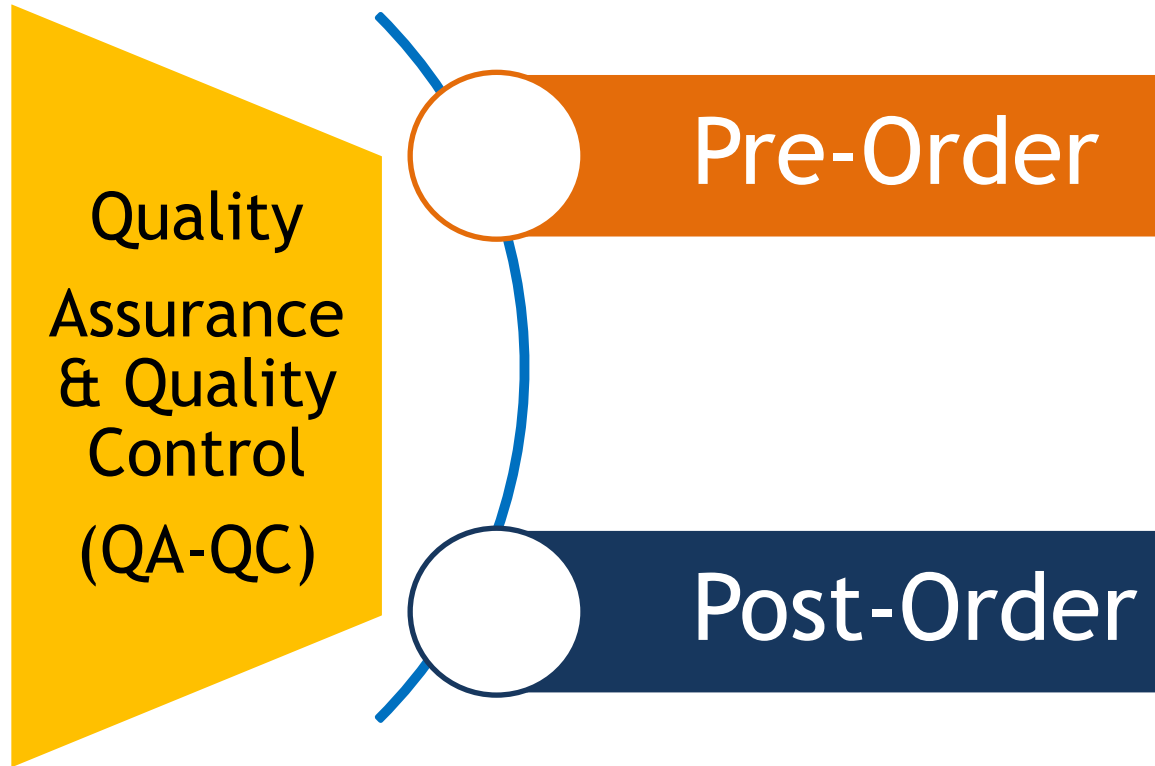
Digitalization & tech-enabled end-to-end systems

3D modelling & design simulations

together everyone
TEAM
achieves more



Landscape / Footprint

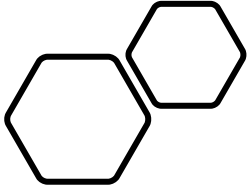


Third Party Inspection Agencies at SISCOOL



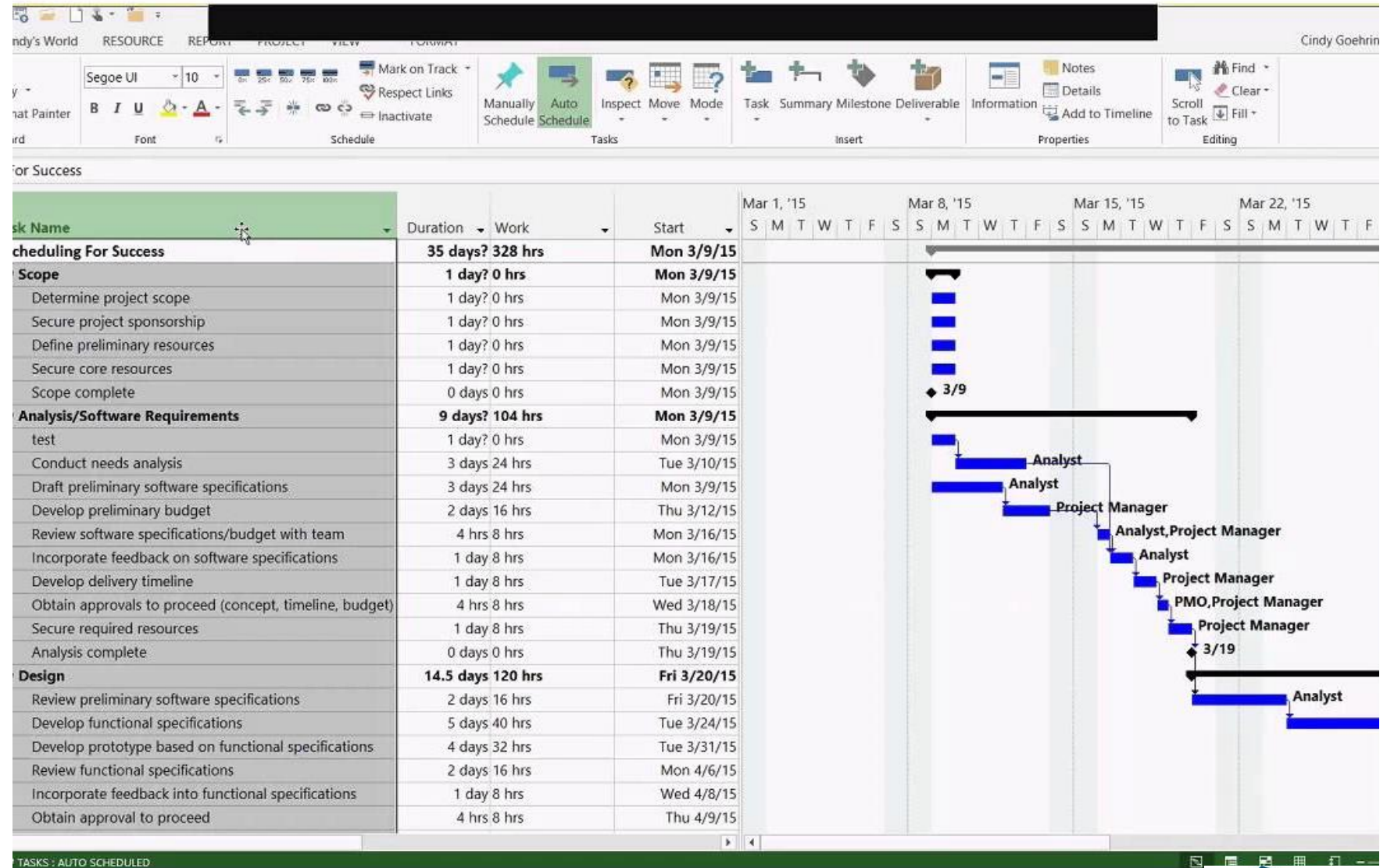
NABL External Labs for Tests, approved by Clients

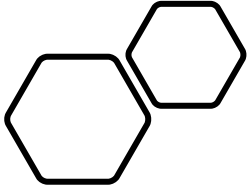
- Shabri Enterprises, Bhilai (Mech, Chem, NDT-AERB Approved)
- Perfect Inspection Services, Bhilai (NDT-NABL Approved)



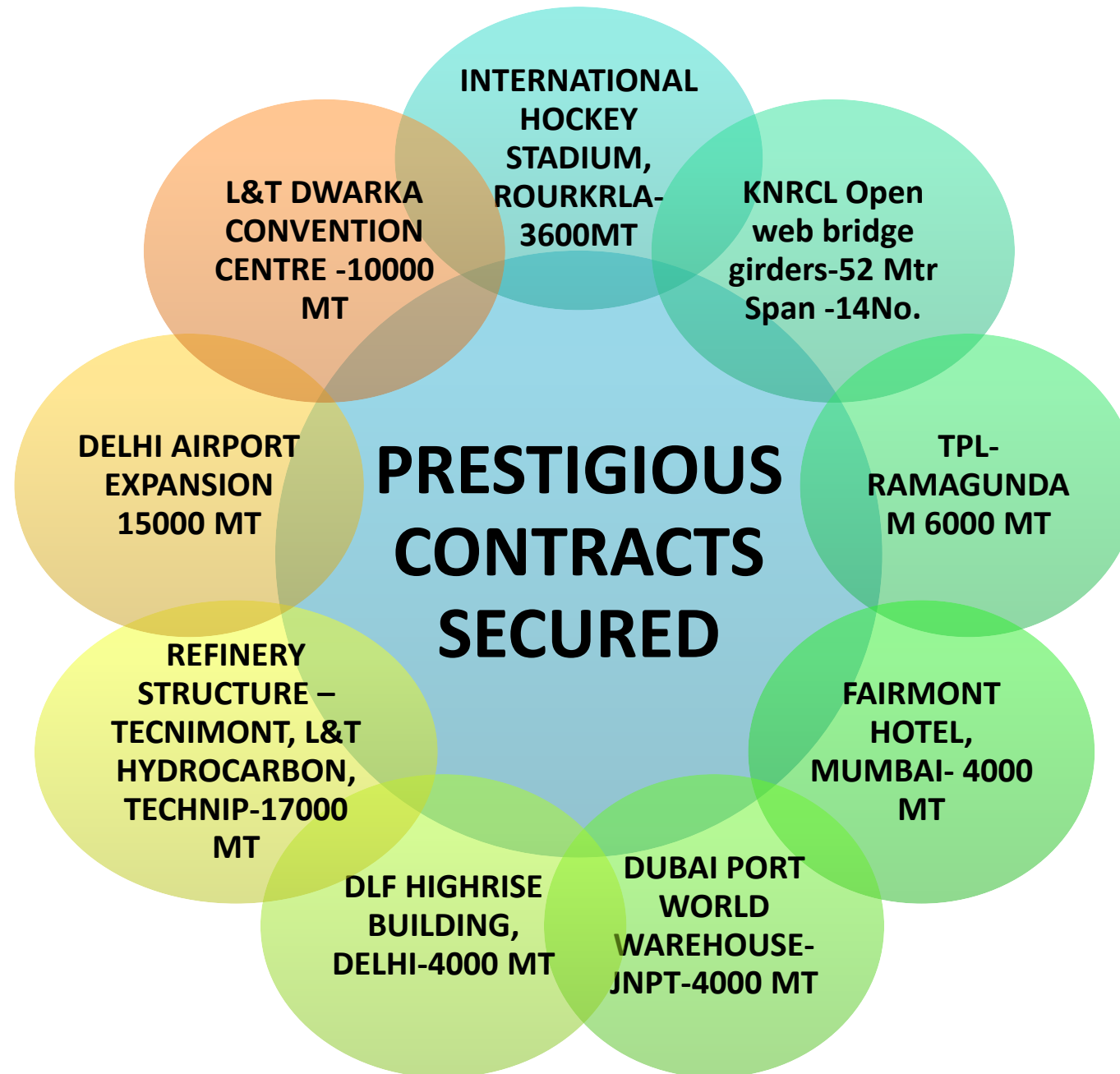
PROJECT MANAGEMENT AND ERECTION SERVICES

SCHEDULING ON MICROSOFT PROJECT





PROJECTS SUMMARY



ORDERS TILL DATE



BRIDGES- 57487 MT



**POWER PLANT AND
REFINERY STRUCTURES-
1,32,098 MT**



**BUILDINGS ,
STADIUMS-
76,454 MT**



**TOTAL ORDERS TILL
DATE 2,66,039 MT**

ORDER DELIVERED TILL DATE-2,20,000 MT

DLF DOWNTOWN, GURUGRAM



ITPL- BANGALORE (4,050MT)



PATNA MEDICAL COLLEGE



SAIL'S SUPER SPECIALTY HOSPITAL AT ROURKELA



MALL OF INDIA , DLF , NOIDA



KEC THANA MUMBAI

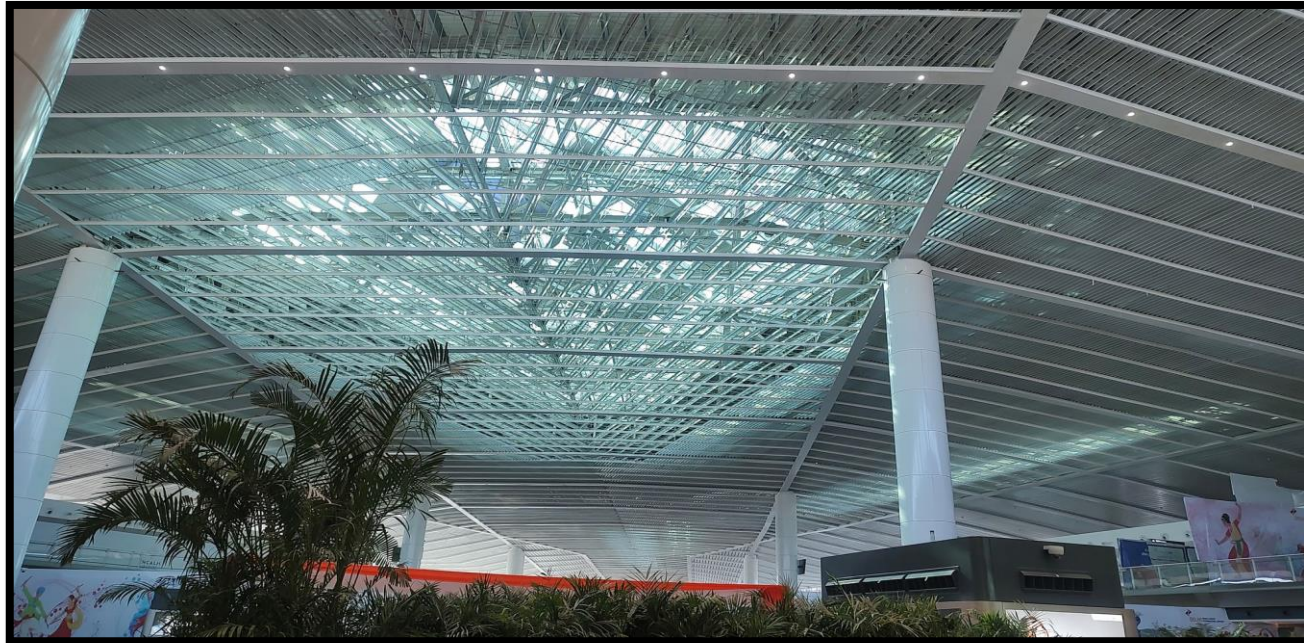


DELHI AIRPORT, T-1



**NEW ARRIVAL HALL,
TERMINAL-1, DELHI**

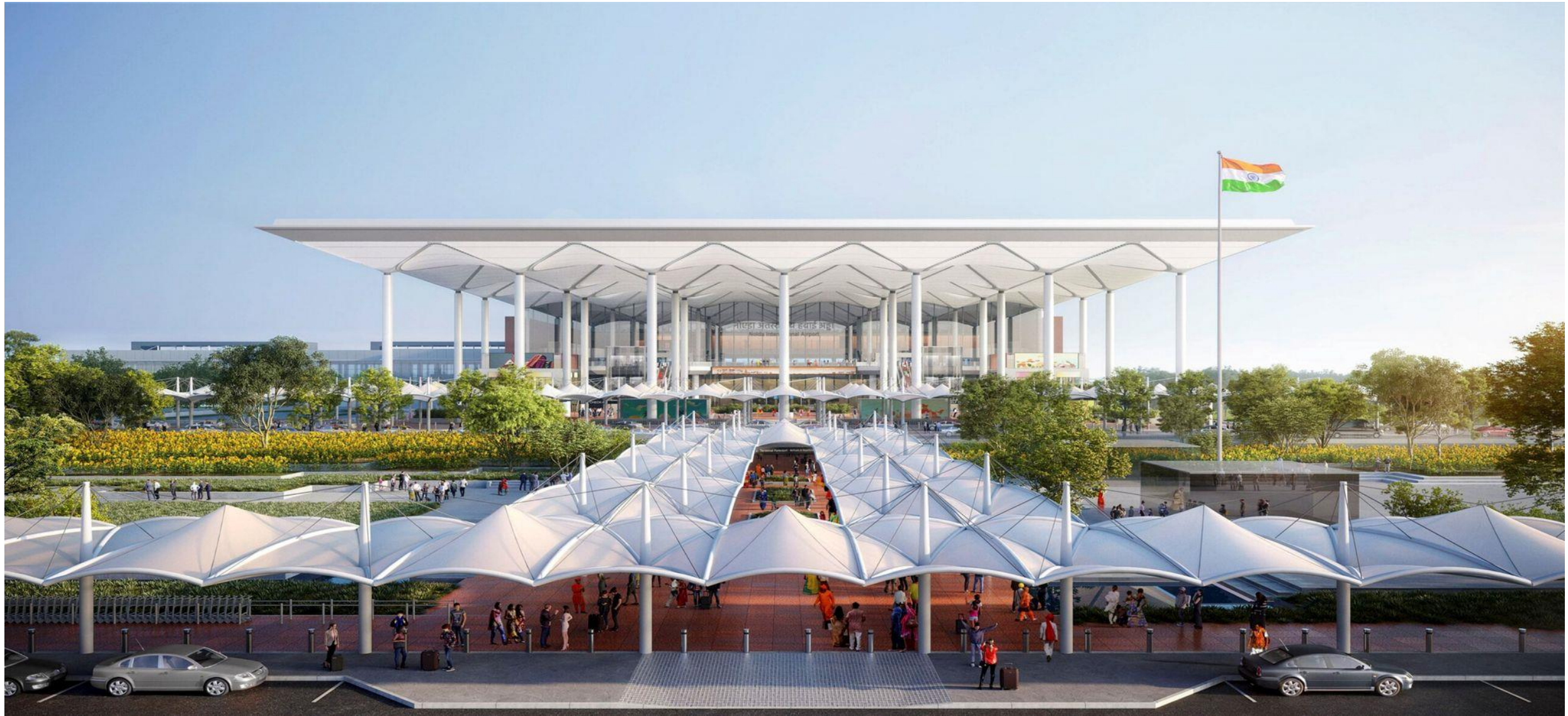
DELHI AIRPORT TERMINAL - 1(DIAL)



BANGALORE INTERNATIONAL AIRPORT



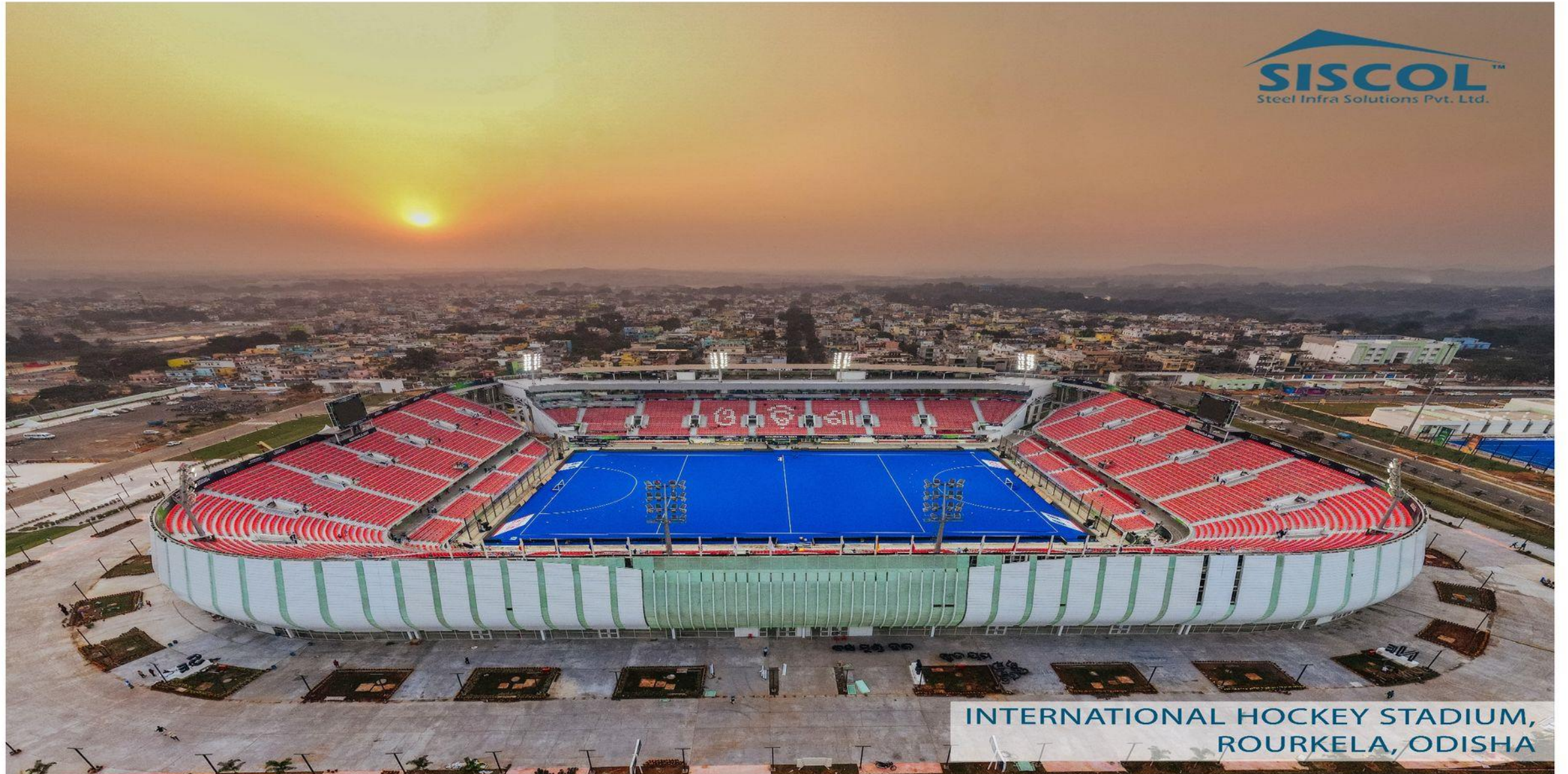
JEWAR INTERNATIONAL AIRPORT UNDER EXECUTION





Dwarka Convention Center, Delhi

INTERNATIONAL HOCKEY STADIUM, ROURKELA, ODISHA



D P World Warehouses JPNT, Navi Mumbai



Tecnimont Algeria Export material at site



LIST OF PELLET PLANT STRUCTURES DONE BY SISCOOL

- RUNGTA MINES-CHALIYAMA
- SCOPE-4000MT
- STATUS- COMPLETED

- RUNGTA MINES-
KAMANDA,DHENKENAL
- SCOPE -6000MT
- STATUS- COMPLETED

- TATA STEEL
- SCOPE- 9000 MT
- STATUS- COMPLETED



TECNIMONT PARADIP





**11 SPAN X 48 MTR. BRIDGE ON
YAMUNA RIVER, FARIDABAD**





**11 SPAN X 48 MTR. BRIDGE ON
YAMUNA RIVER, FARIDABAD**

BRIDGE ON KUDAL SANGAM MALAPRABHA RIVER AT KARNATAKA



2x44 m Bow string bridge



KEC CMRL PORTAL BEAM-380MT



KEC CMRL PORTAL BEAM-380MT



PARDI 15A





Thank you
