



Engineering Innovative Steel Solutions



Engineering Innovative Steel Solutions



# TABLE OF CONTENTS

---

ABOUT US

---

ENGINEERING AND TECHNOLOGY  
DRIVEN ACTIVITIES

---

FACTORIES AND AUTOMATION

---

QUALITY ASSURANCE

---

PROJECT MANAGEMENT AND ERECTION  
ACTIVITIES

# SISCOL PROMOTERS

---



**RAVI UPPAL**  
**CHAIRMAN & MD**

40 years of experience in the Electromechanical & Infrastructure industry. Distinguished record of setting up new businesses & turn around of existing businesses. Worked with ABB, Siemens, L&T, Volvo, JSPL

Ex- Managing Director, JSPL; Ex- Director, Larsen & Toubro; Ex- Whole Time Director, ABB; Ex- Country Head- Volvo



**K . RAJAGOPAL**  
**DIRECTOR – FINANCE**

Over 35 years experience of distinguished service in manufacturing industry. Worked with ABB Switzerland, ABB India, JSPL  
Ex- CFO, JSPL; Ex-CFO, ABB Switzerland



# SISCOL's DIRECTORS

*M K Ventures*



*Siddharth Shah*

*Wharton Engineers &  
Developers Pvt . Ltd.*



*Ranjan Sharma*

*Surin Holdings LLP*



*Aman  
choudhari*

*Steel Infra Solutions  
Pvt . Ltd.*



*Y S Reddy*

*J H Parabia  
(Transport) Pvt. Ltd.*



*Zarksis J  
Parabia*

*Flute Aura  
Entreprises p Ltd*



*Rajesh Laddha*

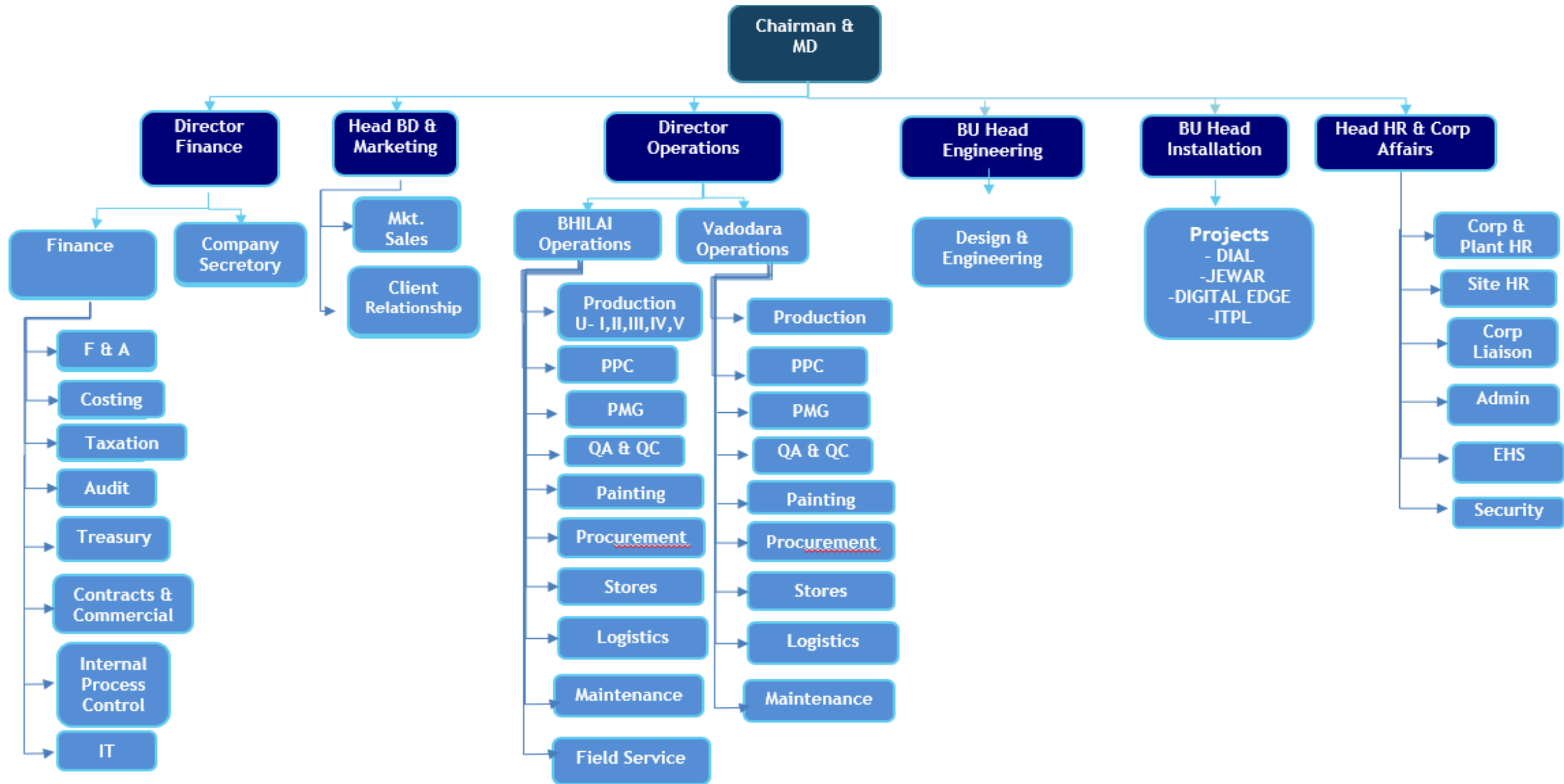
*Meridian  
Investments*



*Siddarth Pai*



# SISCOL COMPANY ORGANISATION CHART



# MANAGEMENT TEAM -Operations & Marketing



**Y S Reddy**  
**COO & Director**  
**(Operations)**

Over 24 years experience in  
Structural fabrication  
industries: Hetat- Singapore,  
Kirby Building Systems  
,Tiger Steel, Octamec.



**Sudipta Das**  
**HEAD – SALES &**  
**MARKETING**

Over 27 years of experience.  
Prior to joining us he was  
associated with Steel Konnect  
India Pvt Ltd, Mc Donald  
Steel, Interarch Building  
Products Pvt Ltd, Kirby  
Building Systems etc.

# MANAGEMENT TEAM - Engineering and Quality



**VINAY KM**

**Head- Design & Engineering**

Mr. Vinaya KM done B.E in Civil Engineering with more than 25 years of experience. Prior to joining us he was associated with Shimizu Corporation India Pvt. Ltd, JSSL, Onyx Industries, Geodesic Techniques etc.



**MUKESH RAO**

**Head - Quality**

Mr. Mukesh Rao done B.E in Metallurgy Engineering with more than 17 years of experience. Prior to joining us he was associated with JSW Steel, Larsen & Toubro, Welspun Corp Limited.



# MANAGEMENT TEAM - HR & ERECTION

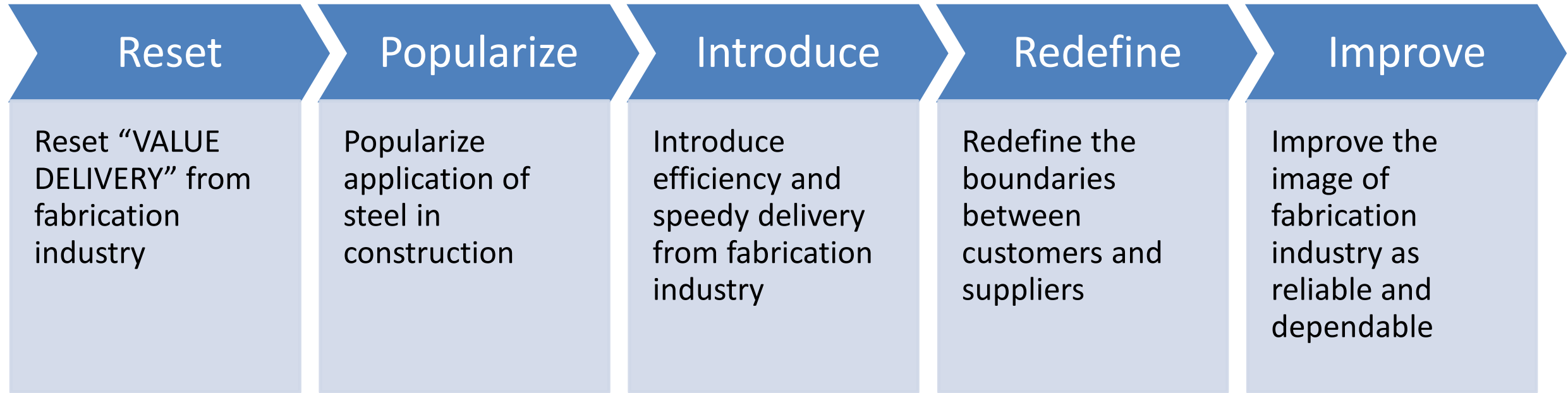


**ANUJ MATHUR**  
**HEAD - HR & ADMIN**



**K.S.L SRINIVASA RAO**  
**HEAD -ERECTION AND  
INSTALLATION SERVICES**

# A new generation company that aims to....



**SISCOL as a company “never sleeps” and is “awake for customer’s needs” at all times**

## Our Vision

To be India's largest supplier of steel-value-based infrastructure solutions

## Our Mission

Build up comprehensive capability for providing end-to-end steel-based solutions covering complete value chain of activities ranging from design, engineering, fabrication, installation-at-site and project management for diverse infrastructural projects

To become 'vendor of choice' for the customers by offering them the 'Best Value' for their investment and strive for an enduring client relationship

To position SISCOL as a champion of steel usage in all construction solutions and contribute to skill development in the neighbouring society

To be a compliant and law abiding citizen

**Engineering Innovative Steel Solutions**

## CORE VALUES

Integrity and fairness in all matters



Respect and mutual trust



Fostering culture of creativity, innovation and teamwork



Ownership of responsibility



Compliance with law and good governance practices

**Engineering Innovative Steel Solutions**

## CORPORATE POLICY

### INTEGRATED MANAGEMENT SYSTEM

SISCOL will achieve and sustain excellence across its value chain to offer end-to-end steel solutions in diverse infrastructural projects that not only meet, but exceed customer expectations. These solutions, encompassing design, engineering, asset-light manufacturing, site erection-installation and project management services will incorporate automation, innovative high productivity and cost effective methods to deliver superior value to our customers by becoming their 'vendor of choice'.

This integrated policy covering quality, environmental, health & safety, information security will be compatible with the context and strategic direction of SISCOL and will be achieved by:

- Continual enhancement of people, products and services through process standardization, system development & implementation, automation, innovation, best-in-class bench-marking and performance measuring mechanism to achieve organizational excellence
- Adopting '4S: Systems, Spirit, Simplicity & Speed' philosophy to deliver high quality product and service to customers in time
- Proactively seek, appraise and implement feedback from customers and other stakeholders with regard to the processes we adhere to; while we continually improve the management systems
- Design-engineer products and solutions with demonstrable superiority in reducing consumption of natural resources, operating with minimum inventory, minimizing waste-scrap generation and prevention of pollution to achieve sustainable growth
- Adopting latest cutting-edge technologies and techniques that translate in quality products & services, accident-free operations, minimize impact on environmental & occupational health and secure IT operations
- Identifying business, health, safety, information security risks & environmental impacts and ensure they are treated through appropriate measures to a level 'As Low As Reasonably Practicable'
- Comply with all applicable legal, statutory, regulatory and other requirements related to our business
- Leveraging information technology and digitalization for enhancing efficiency and effectiveness of every aspect of our business processes, while prudently ensuring confidentiality, integrity and availability of information
- As a socially responsible company, be sensitive to our employees' needs as well as the community we operate in, by providing performance ambience of challenge and empowerment of our employees and partners

Date: 6 February 2018

Ravi Uppal  
Chairman & Managing Director



# Integrated Management Systems Certifications



**ISO  
9001:2015**

**ISO  
14001:2015**

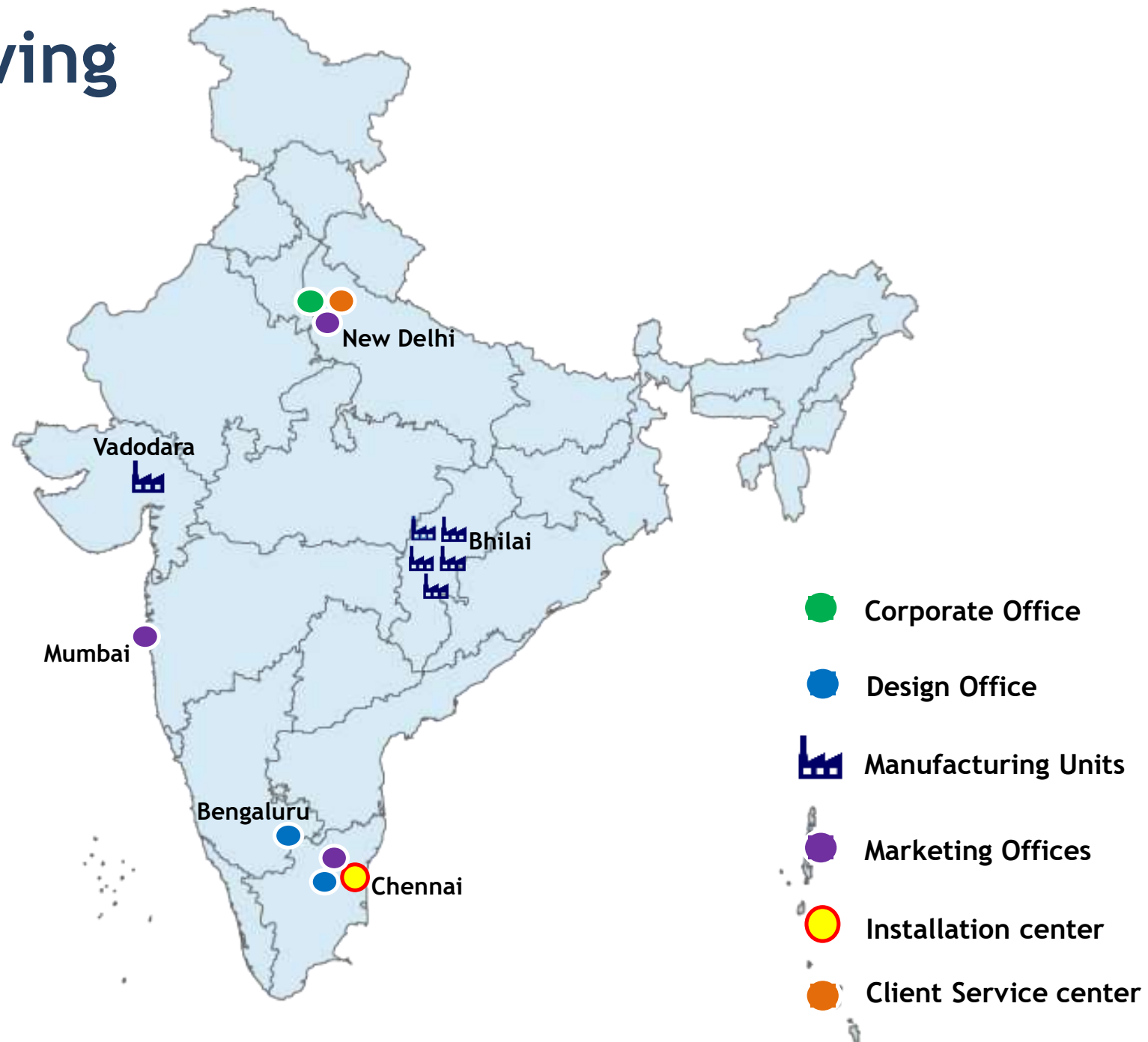
**ISO  
45001:2018**

**ISO  
50001:2011**

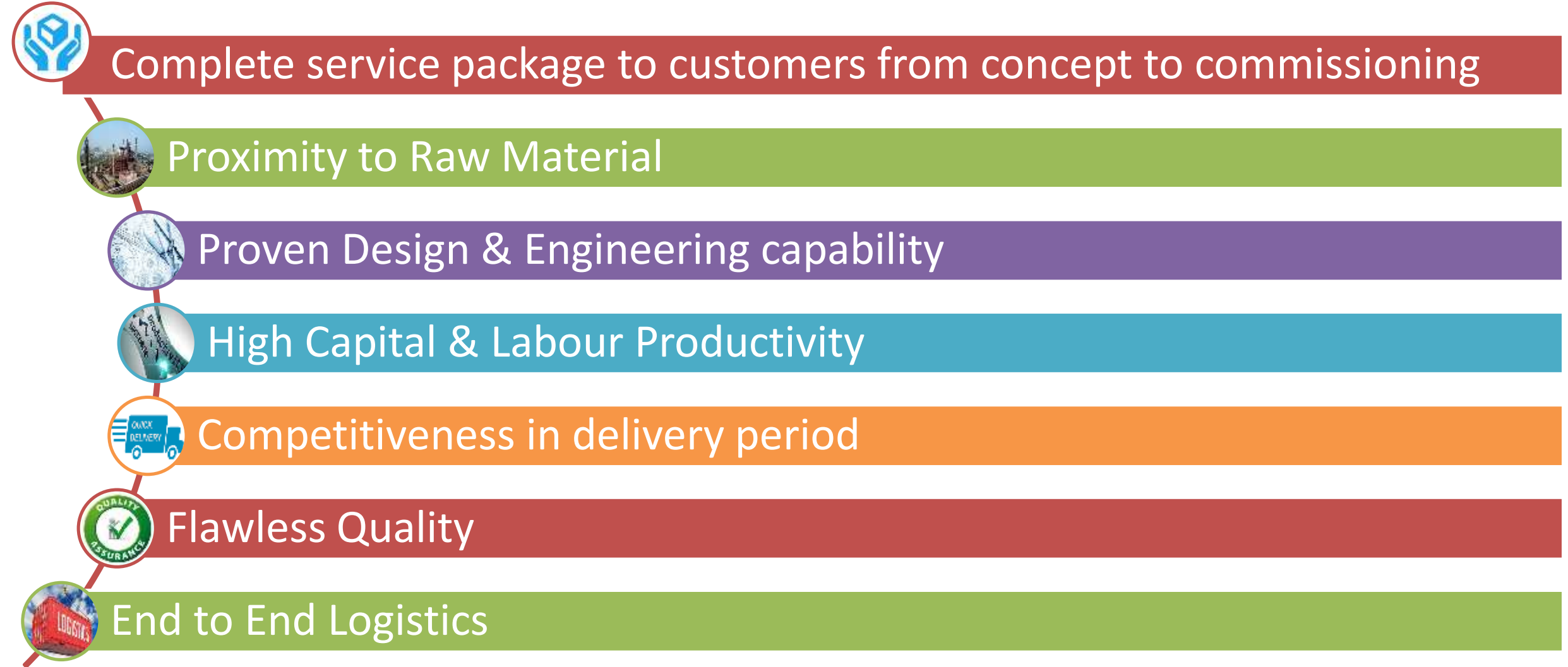
**ISO  
27001:2013**

- All units of SISCOL are covered under the scope of Integrated Management Systems (IMS)
- Occupational Health & Safety Management System upgraded from OHSAS 18001:2007 to ISO 45001:2018
- Certification agency conducted annual surveillance in Feb'20 and found “Zero” non-compliances

# SISCOL's Growing presence

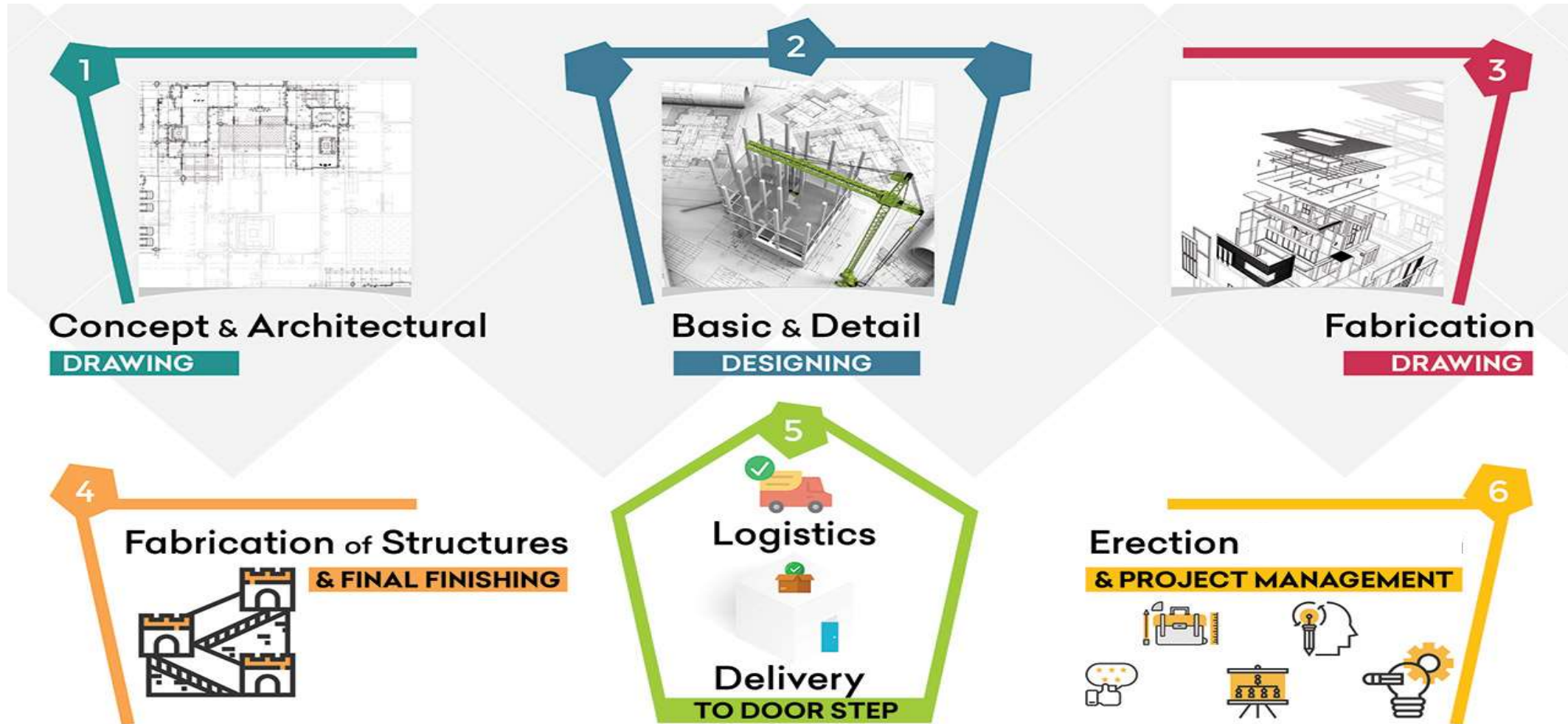


# USPs of SISCOL





# Enterprise offering complete customer solution



# CLIENT SEGMENTS



**Highrise  
Buildings &  
Skyscrapers**



**Airports**



**Sports  
Stadiums**



**Bridges, ROBs,  
Flyovers,  
Skywalks**



**PEB**



**Hotels &  
Hospitals**



**Industrial  
Infrastructure**



**Metro-rail &  
Mono-rail**

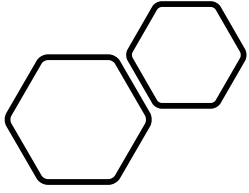


**Launching  
Girders**

# SISCOL's Customers







# **ENGINEERING AND TECHNOLOGY DRIVEN ACTIVITIES**

# Engineering Services

## ANALYSIS AND DESIGN SOFTWARE:

STAAD.PRO, RAM STRUCTURAL SYSTEM, MICROSTRAN, LIMCON, ETABS

## DETAILING SOFTWARE:

•TEKLA, AUTOCAD



STAAD.Pro

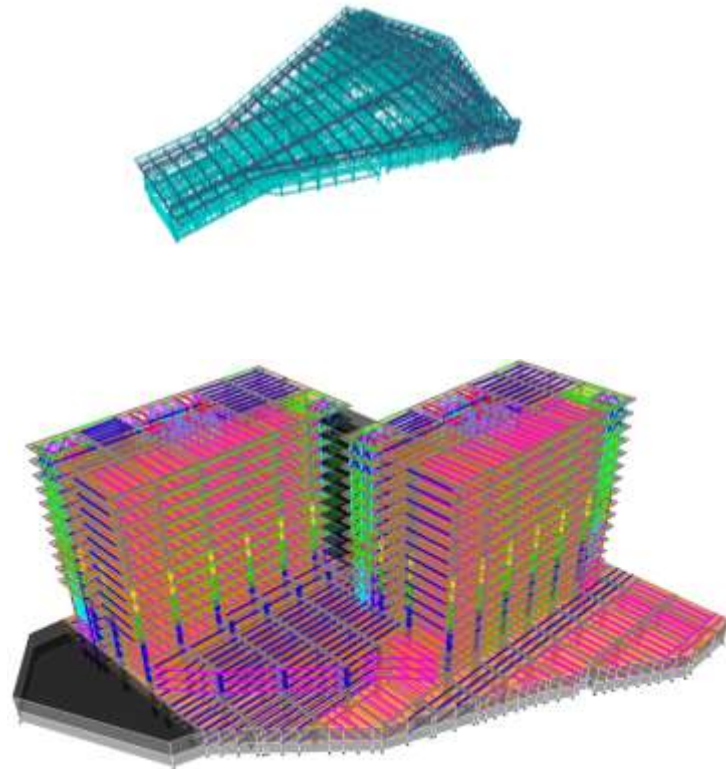
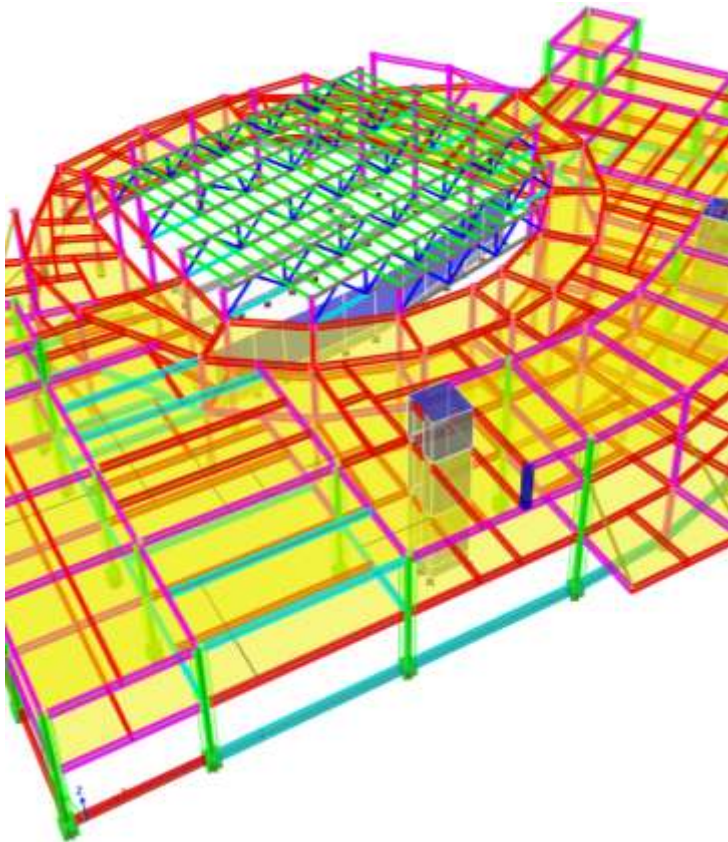
RAM Structural Systems



Design Office @  
Bengaluru, Chennai,  
Bhilai

Team Strength: 50

# DESIGN ENGINEERING

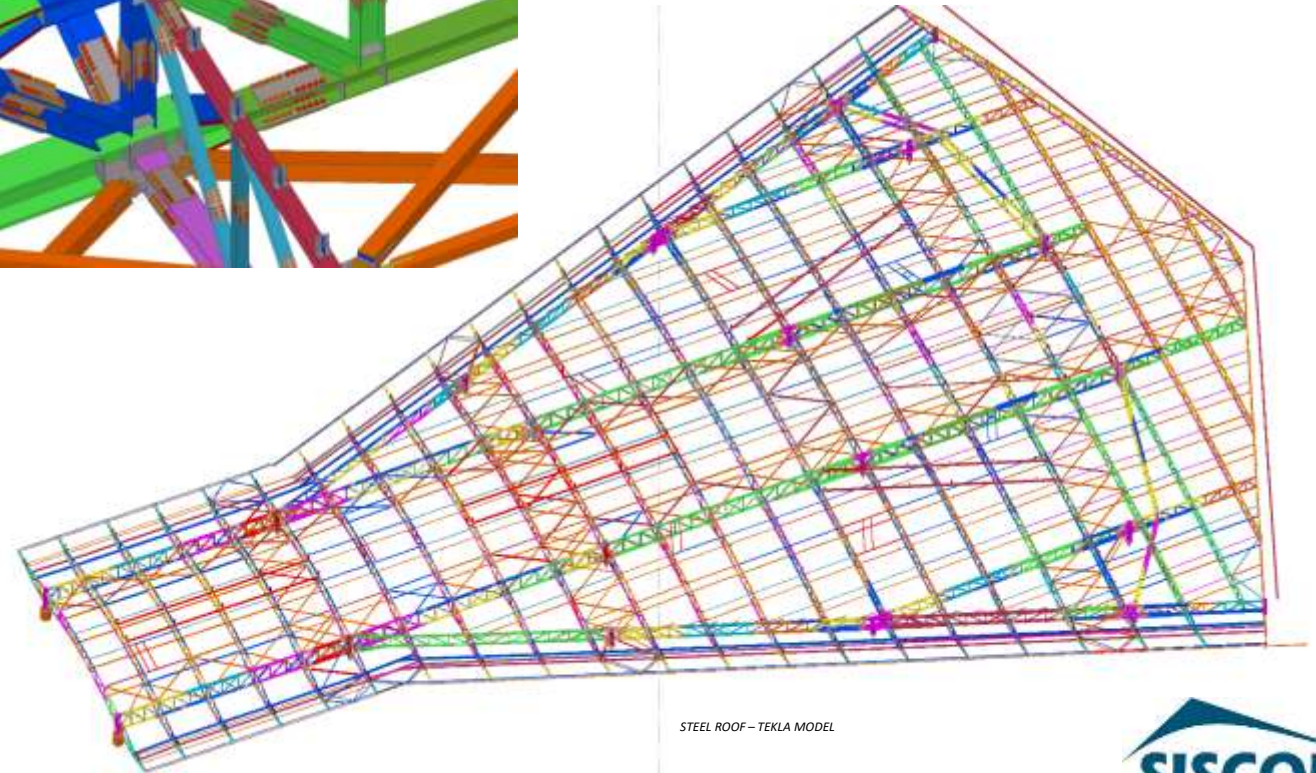
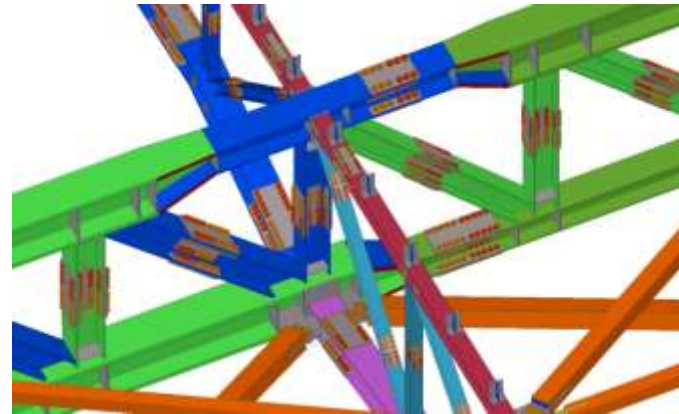
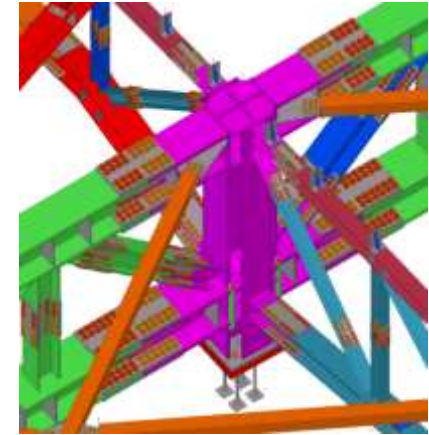
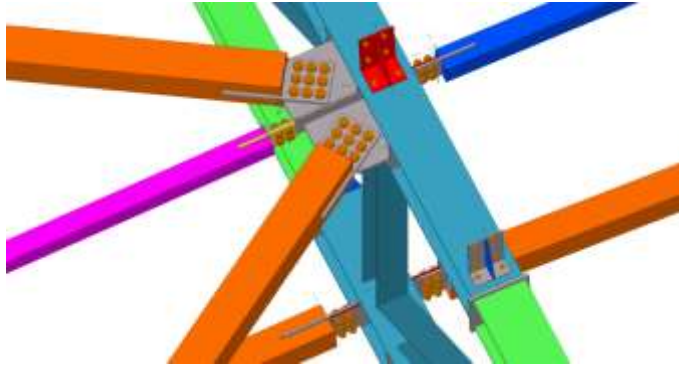


- DESIGN ENGINEERING IS CARRIED OUT USING STAAD OR ETABS
- LOADING IS BASED ON INDIAN OR INTERNATIONAL CODES
- LOAD CASES ARE BASED ON INTERNATIONAL NORMS



# DETAILING

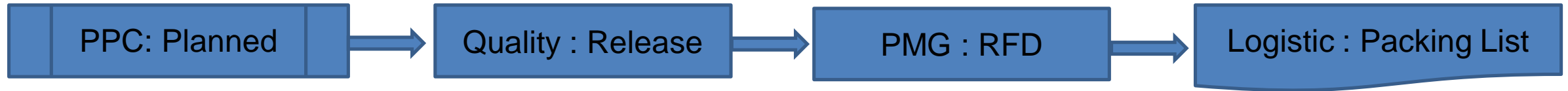
- DETAILING IS DONE USING TEKLA MODELLING
- COMPLEX STRUCTURES CAN BE DETAILED TO ENSURE NO BOLT CLASHES
- TEKLA ALLOWS EASY RESOLUTION TO SITE RELATED ISSUES AND PLAYS A MAJOR PART IN PLANNING ERECTION METHODOLOGY FOR COMPLEX STRUCTURES



STEEL ROOF – TEKLA MODEL



# INTEGRATED SAP SYSTEMS



Steps	Department	Responsibility	Activity (SAP Transaction)
1	PPC	Planning Team	Import all Items and BOM as per drawings, (Production\Production Order: Status = Planned)
2	Quality	Quality Team	Release of Components (Part mark) wise Production Order in SAP after physical clearance of Parts marks (Production\Production Order: Status = Released)
3	PMG	Project Managers	Receipt of Part Marks as RFD from Production Orders. (Production\Receipt From Production)
4	Logistic	Logistics Team	Preparing Packing List only from RFD received by the Project Managers (Sales\Delivery)

# DIGITISED ENVIROMENT TO OPTIMISE EFFICIENCY & PRODUCTIVITY



SAP BASED INTEGRATED SYSTEM TO  
COVER MATERIAL MANAGEMENT,  
PRODUCTION, LOGISTICS, FINANCE  
ACCOUNTING, HR AND  
COMMERCIAL ACTIVITIES



CLOUD BASED SYSTEM  
ADMINISTRATION TO ENSURE DATA  
CONTROL & DATA SECURITY



BAR CODING SYSTEM INTEGRATED  
WITH SAP SYSTEMS



DIGITAL BANKING FOR ALL  
PAYMENTS INCLUDING LETTER OF  
CREDIT OF BANK GUARANTEE

# Smart Glasses based Remote Monitoring/Inspection



## Features:

- Live streaming of video & voice communication
- Light weight device
- Multiple passive viewers
- Hands-free operations making full utilization for actioning

## Impact & Benefits:

- Remote monitoring of jobs by Customer / Leadership team on-demand
- Online Quality/EHS/IT inspection & audits
- Instant support: Remote maintenance assistance / troubleshooting
- On-the-job training to workers to enhance their competency levels
- Reduce travel time and cost due to remote reach-out





The image is a split-screen photograph of two male workers in a factory setting. Both workers are wearing white hard hats, white face masks, and light blue long-sleeved shirts. They are also wearing smart glasses and holding smartphones. The worker on the left is looking at his phone, while the worker on the right is adjusting his smart glasses. A large white diamond shape is overlaid in the center of the image, containing the text 'REMOTE INSPECTION USING SMART GLASSES'.

## REMOTE INSPECTION USING SMART GLASSES

# BAR CODING OF FINISHED GOODS BEFORE DISPATCH

## Advantages:

1. Traceability of Material Being loaded in vehicle vis-à-vis Material mentioned in Packing List.
2. Precise clarity on the Components ( Part marks) produced and categorised as RFD.
3. Shall eliminate errors such as Mismatch of Packing List vs material loaded and despatched , Total Weight loaded against invoiced, Mismatch in address & other fields due to Manual Excel Work.
4. Eradicate Person dependency and increases System efficiency.
5. Client also can use SISCOL barcode that is value addition of SISCOL

	
Item	OTLHC0037_004097
Project	L&T Hydrocarban Engineering Limited - 2
Drawing / Rev	IPEG-6389-8320-67-207C-0029-0093 / 1
Mark / Part	SR7 / 1/1
Rem1	580
Rem2	
Rem3	

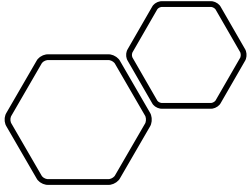




## FINISHED GOOD AND LOGISTICS

- BAR CODING MENTIONING PART MARK, RELEVANT DRAWING NUMBER ON EACH PART
- TRUCKS LOADED AND FASTENED TO ENSURE NO DAMAGES DURING TRANSIT
- GPS TRACKING SYSTEM ON TRAILERS TO MONITOR MOVEMENT TILL DESTINATION





# **FACTORIES AND AUTOMATION**

# Factory Fabrication Facilities

SISCOL Units	Unit-1	Unit-2	Unit-3	Unit-4	Unit-5	Unit-6	Total
Area	7 Acres (28328 sq.m)	4 Acres (16187 sq.m)	7 Acres (20234 sq.m)	2.5 Acres (10117 sq.m)	2.5 Acres (10117 sq.m )	10 Acres (25678 sq.m)	33 Acres (110661 sq.m)
Maximum Production Capacity	1500 MT	1000 MT	1250 MT	500 MT	500 MT	1250 MT	6000 MT
Specialization	Industrial, High Rise	Bridges	Industrial, High Rise	Industrial	Industrial	Industrial	All Sectors
Equipments	CNC Machine, GMAW, FCAW, SAW	CNC Machine, GMAW, FCAW, SAW	CNC Machine, GMAW, FCAW, SAW	CNC Machine, GMAW, FCAW, SAW	GMAW, FCAW, SAW	GMAW, FCAW, SAW	Full-Fledged

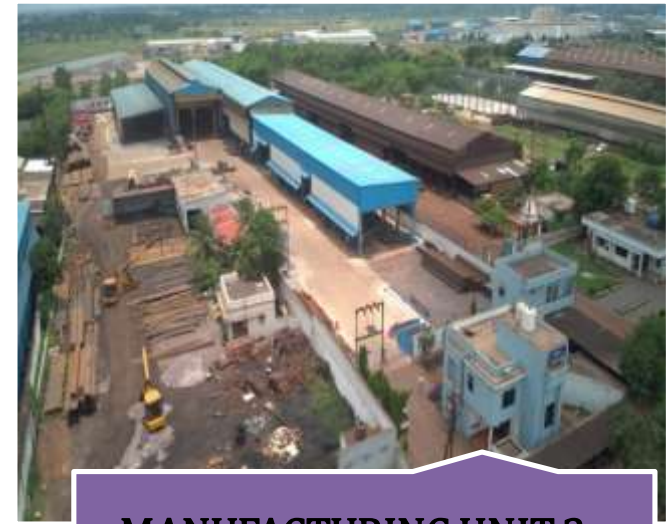




**MANUFACTURING UNIT 1**  
**Capacity - 1500 MT**



**MANUFACTURING UNIT 2**  
**Capacity - 1000 MT**



**MANUFACTURING UNIT 3**  
**Capacity - 1250 MT**



**MANUFACTURING UNIT 4**  
**Capacity - 500 MT**



**MANUFACTURING UNIT 5**  
**Capacity - 500 MT**

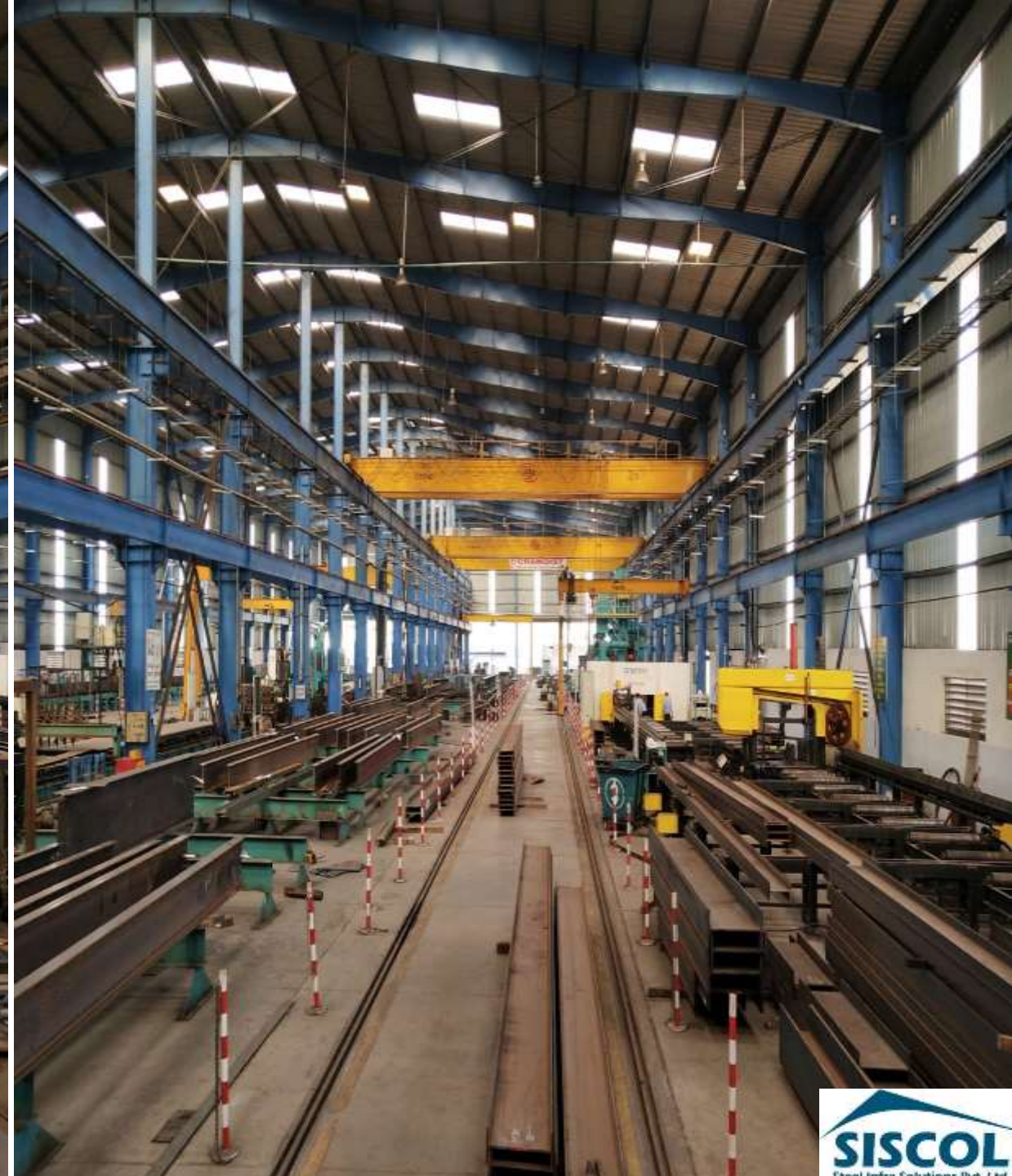
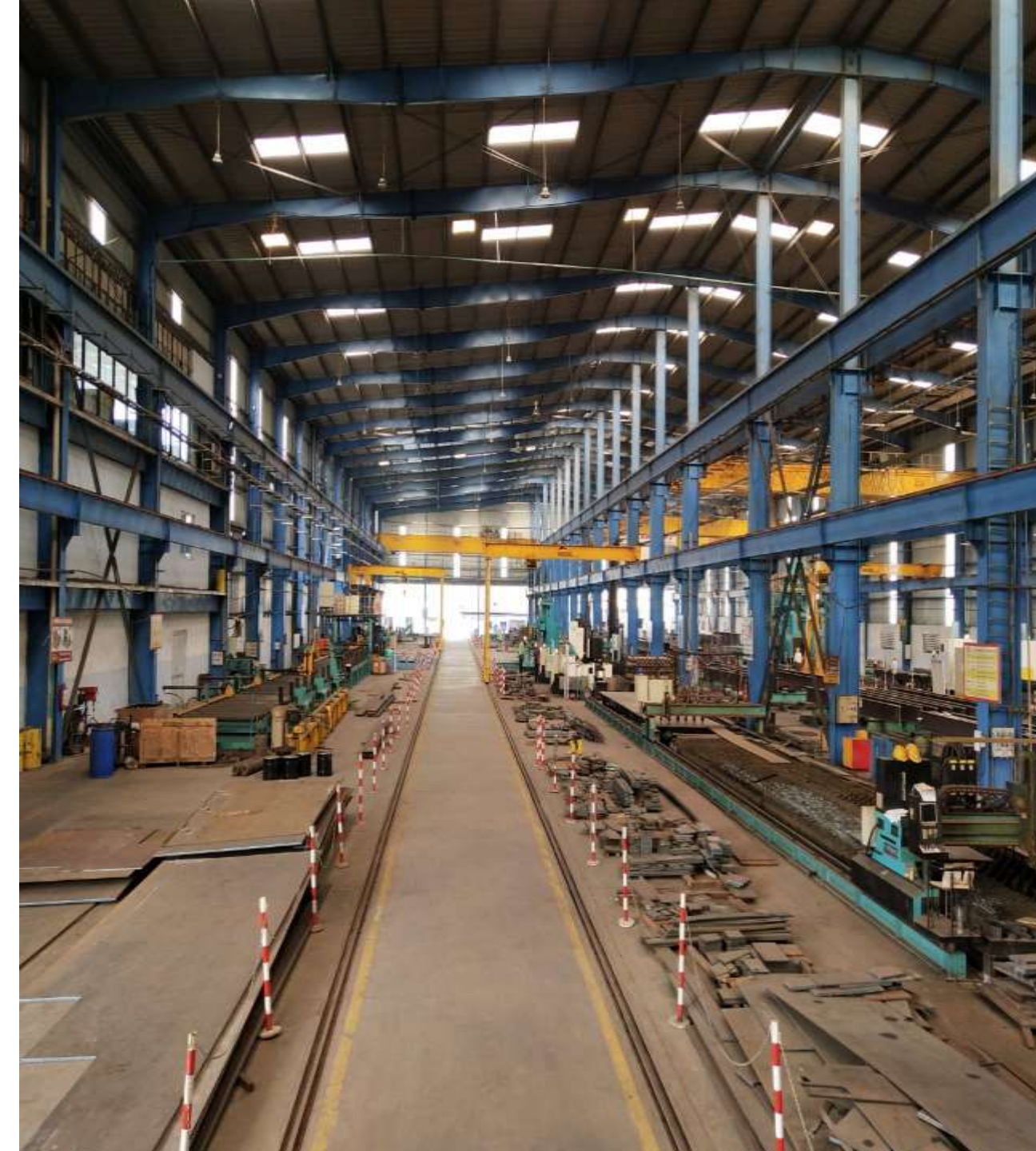


**MANUFACTURING UNIT 6**  
**Capacity - 1250 MT**











# Architect view of BARODA factory



SISCOL LEADERSHIP TEAM



Overall team strength of Bhilai Operations > 1400







# CNC PLASMA AND STRIP CUTTING MACHINES

---





# CNC 3-AXIS DRILLING MACHINES

---



# CNC HIGH SPEED DRILLING MACHINES

---





# CNC Band Saw Machine

---





**Automatic Shot Blasting M/c**



**H-Beam/PTW Machine**





**Painting Booth System**



**Straightening Machine**



**Iron Worker**



**Laser Pointed SAW M/c**



**Milling Maching**



**Radial Drilling Machine**





**75 MT Crawler Crane**



**5-50T EOT & 5T Semi Gantry**



**8 MT Cross Bay Trolley**



**1500 kVA Transformer**



**60 MT Weigh Bridge**



**16 MT Semi Gantry Crane**



# **PAINTING FACILITIES**

## **TOTAL 5 INDEPENDENT PAINT SHOPS AND BLASTING FACILITIES**

- TOTAL CAPACITY OF PAINTING 4000 MT /MONTH.
- ALL PAINT SHOPS ARE EQUIPPED WITH AIRLESS PAINTING MACHINES, COMPRESSORS AND METALIZING EQUIPMENTS.
- DRY ABRASIVE SHOT BLASTING FACILITIES AVAILABLE.
- CHILLED CI SHOTS, PS BALLS AND COPPER SLAG USED AS BLASTING ABRASIVES.





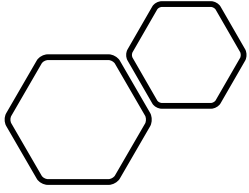
# Logistics Services

- SISCOL provides logistic services for safe delivery of finished goods at site.
- Our plant has facility of internal weighment of Vehicles with a capacity of 60MT.
- All the vehicles are loaded by a team of highly experienced and professional Loaders.



# Logistics Tie-up





# QUALITY ASSURANCE



# Quality Vision

Doing right, 'first time - every time - in time'

Even make it impossible to do wrong things



Thru'

Well trained & dedicated workforce

Proven quality systems & processes; Constantly improved

Automation in manufacturing processes

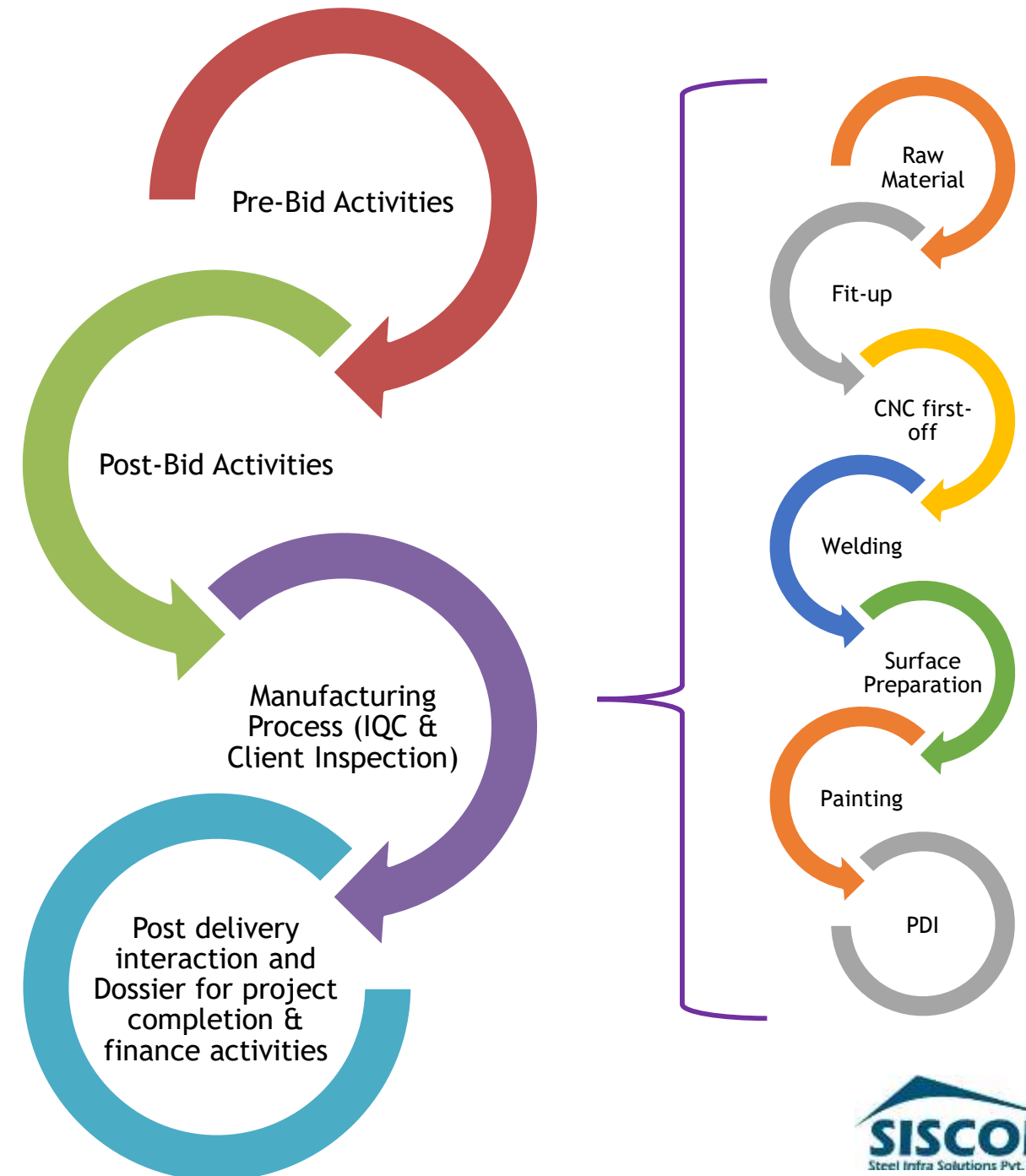
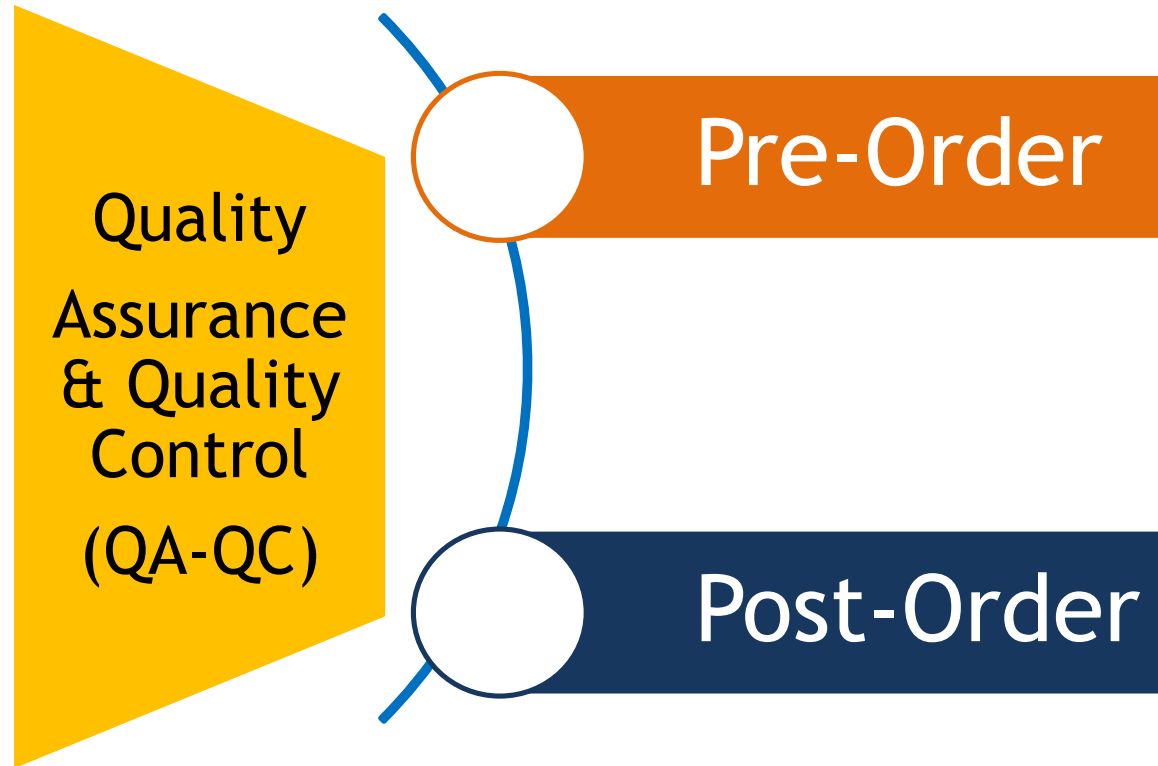
Digitalization & tech-enabled end-to-end systems

3D modelling & design simulations

together everyone  
**TEAM**  
achieves more



# Landscape / Footprint



# Process-wise Control / Check Points from Quality

## RM

- Grade & Specification
- Process Route
- Supply Condition
- Chemical Composition
- Mechanical Properties (YS, UTS, ELONGATION, BEND, IMPACT)
- Dimensional Tolerance
- Edge Condition
- Surface Inspection
- Ultrasonic inspection
- Test Sample frequency
- Plate Marking

## Fit-Up

- Identification / Punching
- Orientation
- Dimension (incl. Connection Missing, Hole Out, Right Angle, Bend)
- Free of Burrs
- Free of Notches
- Splice Plate Available
- Job Not Ready (Hole/Drill/Grinding Balance)
- First Time OK
- Remark (OK/HOLD)

## Welding

- Fit-up Stage Reviewed
- Weld Visual
- Spatter, Slag
- Pinholes/ Porosity
- Undercut
- Weld Size, Overlap, Locking
- NDT (PT/MT)
- NDT (UT)
- First Time OK
- Remark (OK/HOLD)

## Surface Preparation

- Blasting Profile (SA Level - Comparator)
- Anchor Profile (Microns - Random)
- Weld Visual
- First Time OK
- Remark (OK/HOLD)

## Painting

- DFT (Microns)
- Free of Visual Defects
- Paint Sags
- Paint Holidays
- Cracking/ Flakes/ Adhesion/Peel
- Bed Area
- Stenciling
- SISCOL Logo
- First Time OK
- Remark (OK/HOLD)



# Third Party Inspection Agencies at SISCOOL

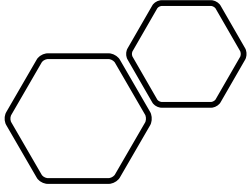
---



## NABL External Labs for Tests, approved by Clients

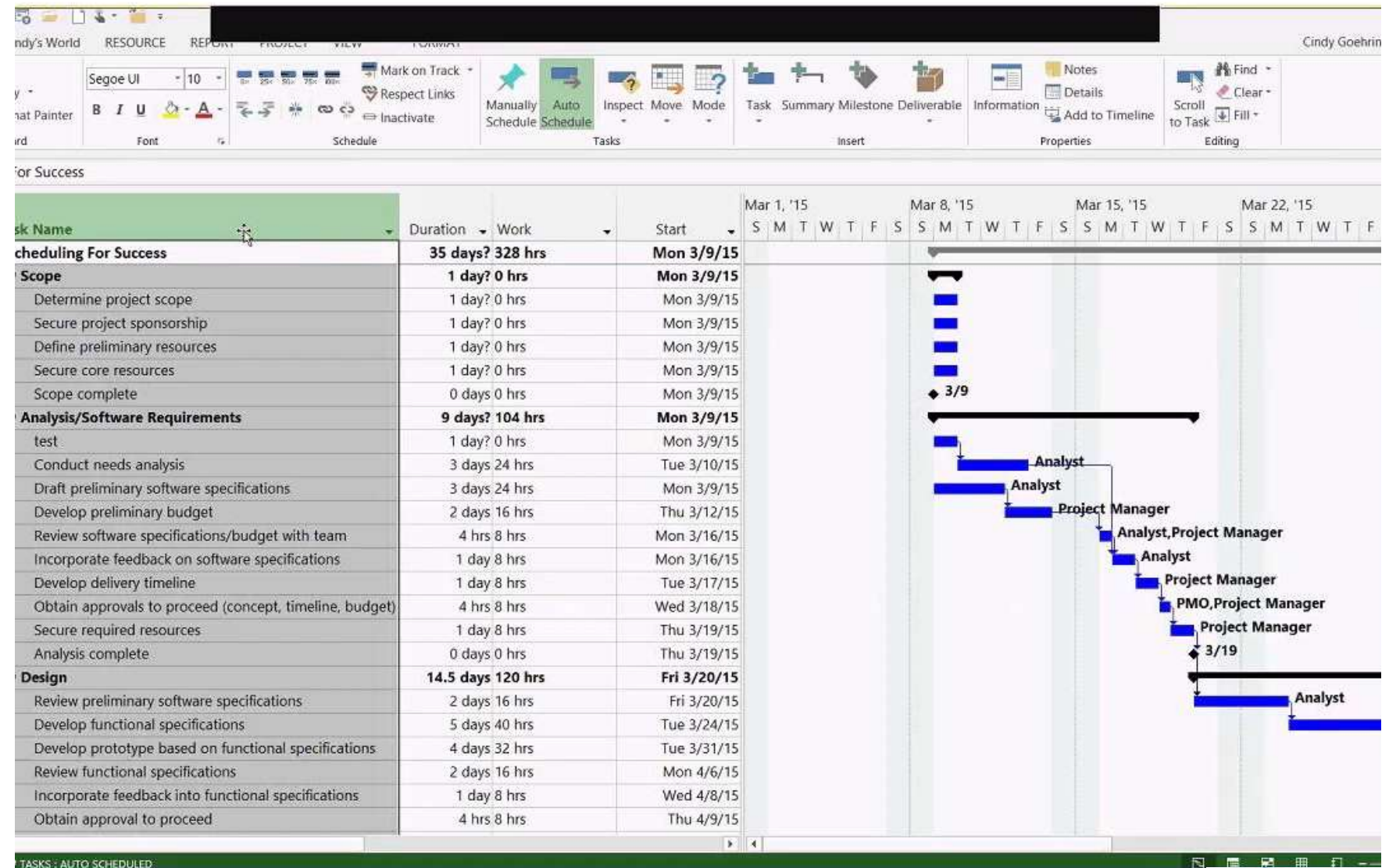
---

- Shabri Enterprises, Bhilai (Mech, Chem, NDT-AERB Approved)
- Perfect Inspection Services, Bhilai (NDT-NABL Approved)



# **PROJECT MANAGEMENT AND ERECTION SERVICES**

# SCHEDULING ON MICROSOFT PROJECT





# S.A.P. BASED STORES MANAGEMENT

File Edit View Data Goto Modules Tools Window Help Action USB Ctrl+Alt+Del

Main Menu  
OEC Corporation-NBS\_Demo manager

Modules Drag & Relate My Menu

Administration  
Financials  
Sales Opportunities  
Sales - A/R  
Sales Quotation  
Sales Order  
Delivery  
Return  
Project Billing  
A/R Down Payment Invoice  
A/R Invoice  
A/R Invoice + Payment  
A/R Credit Memo  
A/R Reserve Invoice  
Document Generation Wizard  
Document Printing  
Dunning Wizard  
Sales Reports  
Purchasing - A/P  
Business Partners  
Banking

Sales Quotation

Customer C30000  
Name Microchips  
Contact Person Fred Buyer  
Customer Ref. No.  
Local Currency  
Order Type Contract

Sales Order

Customer C30000  
Name Microchips  
Contact Person Fred Buyer  
Customer Ref. No.  
Local Currency  
Order Type Contract

No. Primary 103  
Status Open  
Posting Date 04/07/10  
Delivery Date 04/07/10  
Document Date 04/07/10

Contents Logistics Accounting Contract

#	Type	Item No.	Item Description	Qty	In Stock	Disc%	Unit Price	Price after Disco...
1	Net_Project	Network Installation	1		0.000			
2	Project	Project Management	20		0.000	USD 150.00	USD 150.00	
3	Install	Installation	20		0.000	USD 150.00	USD 150.00	
4	S10000	Server Point 10000	1	3	0.000	USD 20,000.00	USD 20,000.00	
5	A00001	IBM Inforprint 1312	2	162	0.000	USD 400.00	USD 400.00	
6	A00002	IBM Inforprint 1222	1	315	0.000	USD 489.00	USD 489.00	
8	Σ	Subtotal						

Sales Employee Sophie Klogg  
Owner Klogg, Sophie

Remarks Based On Sales Quotations 34.

OK Cancel Copy From Copy To

OK Cancel Copy To

Operation completed successfully. [Message 200-48] 04/07/10

# HSE KEY PRACTICES

- **SAFETY FIRST POLICY ADOPTED BY SISCOL**
- **QUALIFIED SAFETY OFFICER AT ALL SITES**
- **TOOLBOX MEETING CONDUCTED EVERY MORNING PRIOR TO START OF WORK**
- **MANDATORY USE OF PPE AT SITE**
- **HIRA (Hazard Identification and Risk Assessment) PREPARATION FOR CRITICAL JOBS.**
- **WORK SPECIFIC TRAINING DONE FOR ALL WORKMEN**
- **SAFE ACCESS ENSURED FOR ALL WORK**
- **THIRD PARTY INSPECTION IS CARRIED OUT FOR ALL P&M**



Head protection  
Falling or flying objects,  
electrical hazards



Eye protection  
Blowing dust or particles, metal shavings,  
acids or caustic liquids, welding light



Fall protection  
Working more than 6 feet or more  
above a lower level



Hand protection  
Chainsaws



Hand protection  
Sharp or hot objects, chemicals,  
biological or electrical hazards



Foot protection  
Falling or rolling objects,  
sharp or heavy objects, wet  
and slippery surfaces, uneven  
surfaces, hot surfaces,  
electrical hazards



Harness lanyard  
Working more than 6 feet or more  
above a lower level

# ERECTION SERVICES

A team of more than **75 people** with rich experience in erection management of various critical structures across the country including Airports, high-rise buildings and Industrial structures.

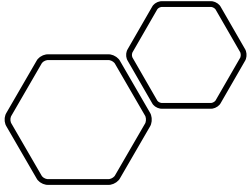




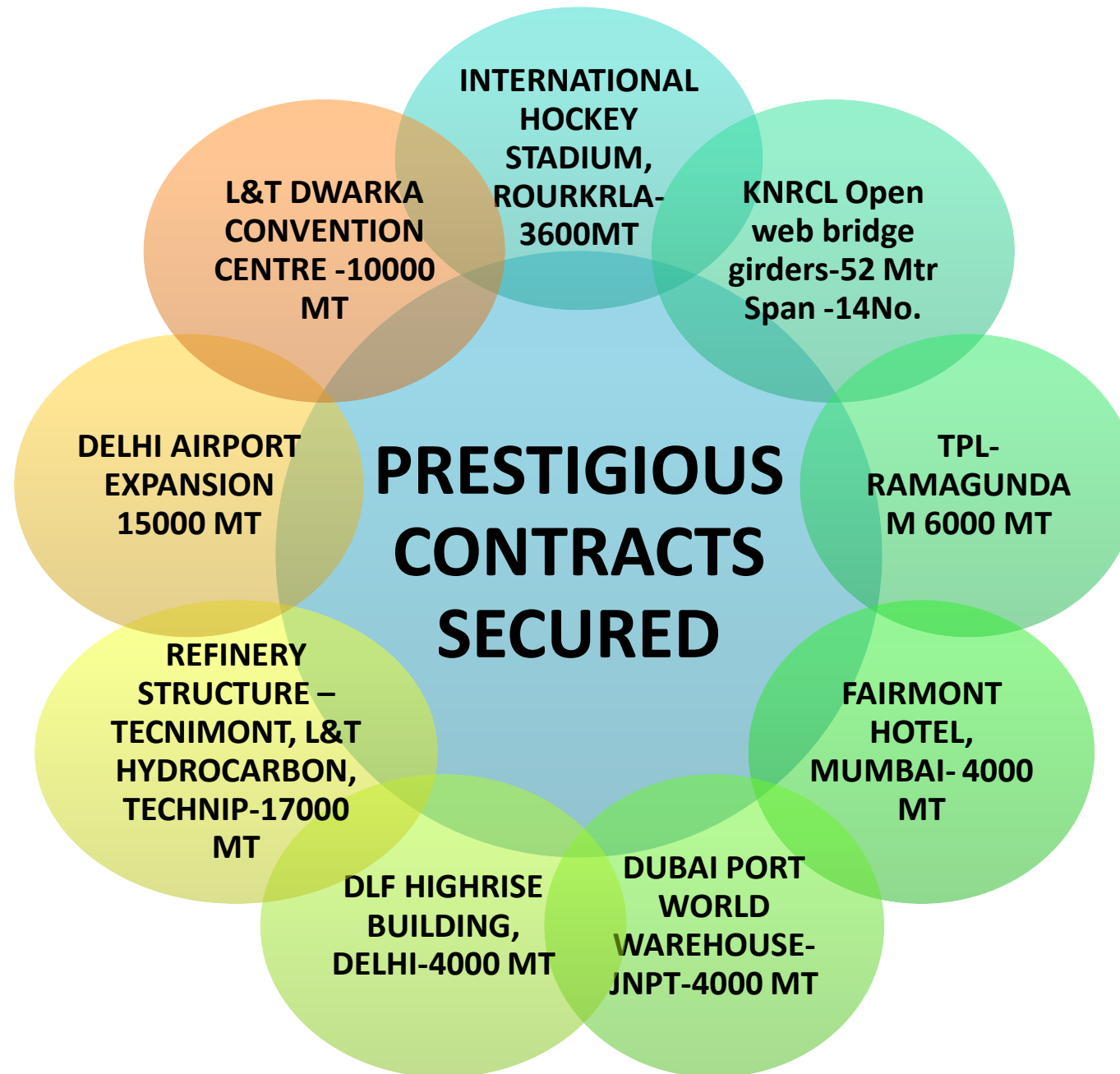


# ERECTION ACTIVITIES USING CRANES AND BOOMLIFT

---



# PROJECTS SUMMARY





# ORDERS TILL DATE



**BRIDGES- 65000 MT**



**POWER PLANT AND  
REFINERY STRUCTURES-  
55000 MT**



**BUILDINGS ,  
STADIUMS-  
80000 MT**



**TOTAL ORDERS TILL  
DATE 200000 MT**

**ORDER DELIVERED TILL DATE-150000 MT**

# DLF DOWNTOWN, GURUGRAM









# SAIL'S SUPER SPECIALTY HOSPITAL AT ROURKELA





# PATNA MEDICAL COLLEGE





# MALL OF INDIA , DLF , NOIDA





# DELHI AIRPORT, T-1



**NEW ARRIVAL HALL,  
TERMINAL-1, DELHI**



# DELHI AIRPORT, T-1, UNDER CONSTRUCTION





# BANGALORE INTERNATIONAL AIRPORT





# JEWAR INTERNATIONAL AIRPORT UNDER EXECUTION







Dwarka Convention Center, Delhi



# DWARKA CONVENTION CENTRE

## EXHIBITION HALL 2



## EXHIBITION HALL 1



Progress Photo-Convention Centre & Car Park





# INTERNATIONAL HOCKEY STADIUM, ROURKELA, ODISHA



# D P World Warehouses JPNT, Navi Mumbai





# DPW MUMBAI





# FAIRMOUNT - SHREM HOTEL, MUMBAI







**Client: ISGEC – INDUSTRIAL  
STRUCTURE, INDONESIA-1005 T**

---



# Tecnimont Algeria Export material at site





# LIST OF PELLET PLANT STRUCTURES DONE BY SISCOOL

- RUNGTA MINES-CHALIYAMA
- SCOPE-4000MT
- STATUS- COMPLETED

- RUNGTA MINES-  
KAMANDA,DHENKENAL
- SCOPE -6000MT
- STATUS- COMPLETED

- TATA STEEL
- SCOPE- 9000 MT
- STATUS- COMPLETED

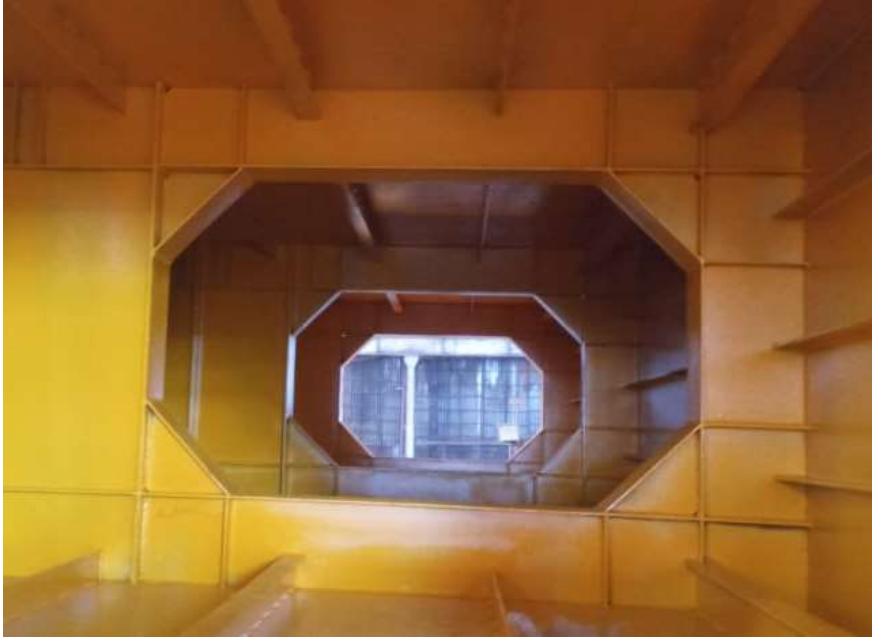






**Client: Rungta Mines Limited-  
DSP Pellet Plant-3000 T**





**CLIENT: L&T TIIC, MAHSR C6-  
Vadodara-500 MT**

---



**CLIENT: L&T TIIC, MAHSR C4-  
Surat-1650 MT Launch Girder**





POWER PLANT  
BOILER COLUMNS  
KHURJA





**CLIENT: L&T HYDROCARBON,  
BHATINDA REFINERY-2250 T**



# TECNIMONT PARADIP









**11 SPAN X 48 MTR. BRIDGE ON  
YAMUNA RIVER, FARIDABAD**







**11 SPAN X 48 MTR. BRIDGE ON  
YAMUNA RIVER, FARIDABAD**



# BRIDGE ON KUDAL SANGAM MALAPRABHA RIVER AT KARNATAKA

---





## 2x44 m Bow string bridge





# KEC CMRL PORTAL BEAM-380MT





# PARDI 15A







**Thank you**